

YSPM'S

YASHODA COLLEGE OF ARCHITECTURE

SATARA

ARCHITRAIL 2023

DEVRAI : SYMBIOTIC RELATION BETWEEN NATURE AND HUMANS





YASHODA INSTITUTES, SATARA

Founder: Prof. Dasharath Sagare

Institute Code 6757 **NAAC Accredited Institute**

- ARCHITECTURE (6880)
- ENGINEERING
- POLYTECHNIC
- PHARMACY
- MBA
- MCA
- Pharm.D
- BBA
- BCA
- Junior Colleges
- CBSE Board School
- State Board Schools

Salient Features

- ▶ Excellent Academic Achievements
- ▶ Active Research & Development Cell
- ▶ Well-equipped laboratories
- ▶ Highly Qualified, Experienced Teaching Staff
- ▶ 100% Placement Assistance
- ▶ Scholarship as per Government Norms
- ▶ Industry-Institute Interaction Cell
- ▶ Entrepreneurship Development Cell
- ▶ Industry Ready Global Certification Courses
- ▶ NPTEL Local Chapter
- ▶ Great Learning Digital Campus
- ▶ Expert Lectures of Eminent Personalities

English Medium

- Yashoda Public School, Satara. (C.B.S.E.)
Mob. : 9011954660
- Sadhana English Medium School, Yashodanagar,
Satara.Mob.: 8767311252
- Yashoda Junior College of Science & Commerce.
Mob.: 9011954660

Sch

मराठी
माध्यम

Schools and Colleges

मराठी
माध्यम

- * कर्मवीर मामासाहेब जगदाळे बालक मंदिर, बशोदानगर, सातारा. मो. : ९५७९९९४२९३
- * कर्मवीर मामासाहेब जगदाळे प्राथमिक शाळा, बशोदानगर, सातारा. मो. : ९५७९९९४२९३
- * लोकनेते सुवराव कदम ज्यु. कॉलेज ऑफ़ आर्ट्स, कॉमर्स अँड सायन्स, बशोदा संकुल, सातारा. मो. ८३२९९९६३७२
- * साधना बालविहार, बशोदासंकुल, सातारा. मो. ८३२९९९६३७२ * साधना प्राथमिक शाळा, बशोदासंकुल, सातारा. मो. ८३२९९९६३७२
- * साधना विद्यालय, बशोदासंकुल, सातारा. मो. ८३२९९९६३७२ * न्यु इंग्लिश स्कूल, नुने, ता. पाटण मो. ७५०७००४५५५
- * माध्यमिक न्यु इंग्लिश स्कूल, राधिकानगर, विलासपूर, सातारा. मो. ९९२२५८०२६५

21
INSTITUTES

100+
UNIVERSITY
RANK HOLDERS

200+
ACADEMIC & INDUSTRIAL
COLLABORATIONS

9000+
STUDENTS

21000+
ALUMNI

+91 9172220775 | www.yes.edu.in | Wadhe, NH-4, Satara



VISION

To empower the students with knowledge, Values, Skills, Innovative / Creative lateral thinking and meet the educational, social, global, environmental and economic needs of the region and nation to create Humane Society.

MISSION

- To impart quality education & training to students for shaping their career with providing opportunities to students & faculty and continuous learning opportunities.
- To empower the students with recent knowledge, skills and right attitude in order to meet the challenges of future by guidance, seminars & lecture's as well as Environmental issues.
- To generate new knowledge and promote excellence in research and extension activities.
- To make efforts for the spread of technical education among classes and communities, which are socially and educationally underprivileged specifically for rural areas.

PROGRAM OUTCOMES

PO 1. Architectural knowledge: Apply the knowledge of mathematics, science, engineering fundamentals, and an engineering specialization to the solution of complex engineering problems.

PO 2. Problem analysis: Identify, formulate, review research literature, and analyze complex engineering problems reaching substantiated conclusions using first principles of mathematics, natural sciences, and engineering sciences.

PO3. Design/development of solutions: Design solutions for complex engineering problems and design system components or processes that meet the specific needs with appropriate consideration for the public health and safety, and the cultural, social, and environmental considerations

PO4. Conduct investigations of complex problems: Use research-based knowledge and research methods including design of experiments, analysis and interpretation of data, and synthesis of the information to provide valid conclusions.

PO5. Modern tool usage: Create, select, and apply appropriate techniques, resources, and modern engineering and IT tools including prediction and modeling to complex engineering activities with an understanding of the limitations.

PO6. Social responsibility of an architect: Apply reasoning informed by the contextual knowledge to assess societal, health, safety, legal and cultural issues and the consequent responsibilities relevant to the professional engineering practice

PO7. Environment and sustainability: Understand the impact of the professional engineering solutions in societal and environmental contexts, and demonstrate the knowledge of, and need for sustainable development.

PO8. Ethics: Apply ethical principles and commit to professional ethics and responsibilities and norms of the engineering practice.

PO9. Individual and team work: Function effectively as an individual, and as a member or leader in diverse teams, and in multidisciplinary settings.

PO10. Communication: Communicate effectively on complex engineering activities with the engineering community and with society at large, such as, being able to comprehend and write effective reports and design documentation, make effective presentations, and give and receive clear instructions.

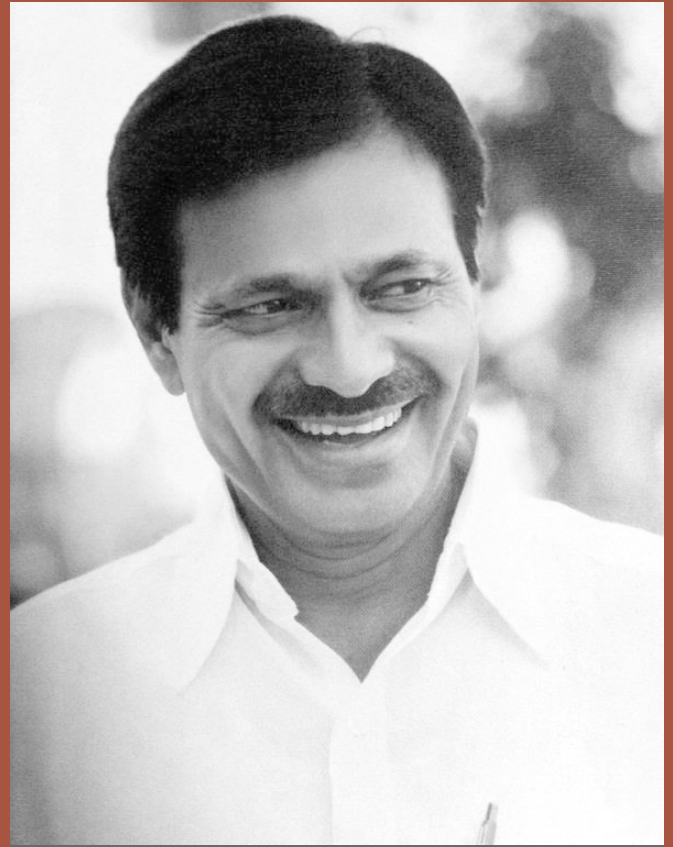
PO11. Project management and finance: Demonstrate knowledge and understanding of the engineering and

PROGRAM SPECIFIC OUTCOMES

PSO1. Professional Skills: Apply the knowledge of natural condition of site and environment, history and cultural context, building material, construction techniques and services, structural mechanics and building economics to design buildings rationally for user and environment friendly

PSO2. Collaborative Skills: Skill development for communication and collaborative works

PSO3. Problem-Solving Skills: Apply creative ideas, principles, theory rationally. Apply appropriate methods, media, modern technology to resolve architectural and multidisciplinary researches



FOREWORD

I welcome you to YSPM's Yashoda Technical Campus, Satara, an Institution which inculcates true values while disseminating quality education for shaping the career of our students. In 2015, Yashoda College of Architecture was established to increase our crescent in education for students. I have always envisioned a holistically responsive infrastructure for the city of Satara.

We continually blaze new trails for our students to discover new learning opportunities that will enable them to be wholesome individuals who believe in themselves and what future can offer them. We emphasize on overall personality development of our students. Our faculty pays attention to each student to focus on their strength and to develop confidence. We provide students a platform to excel not only in academics but also in co-curricular and extracurricular activities. We encourage individual growth, team building, industry interaction and multi-disciplinary study culture.

I congratulate faculty of Architecture for undertaking challenges and publishing their Second magazine displaying blooming progress of our students in their academic & extracurricular activities.

I am confident; with the support of our efficient & dedicated team and forever enthusiastic students they have delivered a value based publication. I hope this experience will stand them in good stead in coming years. I wish them best of luck & success for their future endeavors.

PROF. DASHARATH SAGARE
FOUNDER PRESIDENT
YASHODA SHIKSHAN PRASARAK MANDAL

FOREWORD



During the process of evolution for the last five years of Yashoda College of Architecture, has blossomed into full-fledged temples of learning by offering the most sought after programs, with state-of-the-art infrastructure and experienced & well-qualified academicians as faculty. We take pride that our college has exemplified excellence in Professional education with an emphasis on creating outstanding graduates by traversing many boundaries to develop our expertise in fast-tracking higher education. In doing so, we are not in competition with anyone else but ourselves for promoting excellence and innovation in imparting quality education.

It is indeed a pleasure for us to present this magazine before you. It will cover almost all the activities i.e., academics, sports, study tours, cultural or extra-curricular. It has taken a joint effort of students and staff of YCA.

We suppress maximum on student's autonomy to cultivate their ideas, bring up newer creativity. When they undergo strenuous activities followed by YCA, it results in many good outputs, some of them are, exhibition, design competitions, intensive workshops, Yashoda marathon, poster presentation, etc.

We promise to keep same pace in improvement, inspiration and cultivate more flowers as these, as YSPM grows in different areas and different countries.

Lastly, I extend my best wishes to the magazine team and all editors for their contribution.

PROF. AJINKYA SAGARE
VICE-PRESIDENT
YASHODA SHIKSHAN PRASARAK MANDAL



FOREWORD

I am very proud of the “ARCHITRAIL 2023” magazine initiative. It is an outcome of a continuous effort and hard work of the faculty and students of Yashoda College of Architecture.

Yashoda college Students experiences various Seminars, Workshops, National level conferences, Site visits, Study Tours, college Magazine and many other activities for necessary exposure which are of high importance in professional life. This helps them in meeting the challenges of life. We are dedicated to ensuring that your College life would be an enjoyable & a memorable experience of your life.

The college has developed excellent infra-structural facilities. The College provides not only technical education to students but also conducts many co-curricular and extra-curricular programs, which ensure multifaceted development of students. With all the laurels we have achieved till date, I am sure we will keep providing a gamut of professional Architects, backed by top most professional services.

With the notion that erudition and hard work are the basis of success and prosperity, I intend to mold future architects as ardent individuals; envisioning on the past and present architecture leading them into an International world of architecture.

Our President Mr. Dasharath Sagare Sir & Vice President Mr. Ajinkya Sagare Sir's unstinting support has encouraged us into taking our institute to a great pinnacle of glory. He has always been a source of inspiration for all of us. The valuable guidance of our Directors is also an inspiring factor and their presence gives us a moral boost.

PROF. SUHAS TALEKAR
PRINCIPAL
YASHODA COLLEGE OF ARCHITECTURE

FOREWORD



As a member of the Board of Yashoda College of Architecture (YCA), it is my pleasure to extend my Warm Greetings to all those who are part of this Esteemed Institution. This Annual Publication celebrates our Collective Achievements and serves as a platform to showcase the Incredible Talent and Innovation within our midst. We are proud to announce that Yashoda College of Architecture has been Awarded a B++ grade in the first cycle of Accreditation by the National Assessment and Accreditation Council (NAAC). This Recognition is a Testament to our Commitment to Academic Excellence and the Holistic Development of our Students. We Extend our Heartfelt Gratitude to everyone involved in this Remarkable Achievement, including all the Faculties, Students, Parents, Alumni, Employers, Teaching and Non-Teaching staff, all the Stakeholders involved, and the entire Team of Yashoda Shikshan Prasarak Mandal. At YCA, we firmly believe in the Transformative Power of Architecture and its Ability to Shape the World for the Better. As Guardians of this Noble Profession, we are committed to Nurturing a Culture of Excellence and Innovation among our Students, Faculty, and Staff. The Pages of this Magazine offer Inspiring Stories, Groundbreaking Research, and Visionary Designs that reflect the breadth and depth of our commitment to Architectural Excellence. From Sustainable Urban Development to cutting-edge Technological Advancements, our Institute continues to push the boundaries of what is possible in the Field of Architecture. We are also proud to Highlight the Invaluable Contributions of our Esteemed Faculty Members, whose dedication to Teaching, Research, Mentorship, and Professionalism has helped shape the next Generation of Architectural Leaders. As you peruse the pages of this Magazine, we encourage you to reflect on the profound impact that Architecture has on our lives and communities. Whether it is Designing Innovative Spaces that promote Social inclusion or Preserving our Rich Cultural Heritage, Architects play a Crucial Role in shaping the World Around Us. To all our students, we extend our Heartfelt Congratulations and Best Wishes for the Future. Your Passion, Creativity, and Dedication Inspire us all, and we do not doubt that you will go on to Accomplish Great things in the Field of Architecture. In closing, I express my sincere gratitude to everyone who has contributed to the success of this Magazine, from our Talented Contributors to our dedicated Editorial Team. Your hard work and commitment are truly Appreciated. May this Annual Publication continue to serve as a Source of Inspiration and Pride for our Entire Institute, and may it Promote the Importance of Architecture in shaping a Better World for Future Generations. I wish you all the best in your Endeavors, and may you continue to push the boundaries of Architectural Excellence in the future as well.

PROF. SWARALI SAGARE
TRUSTEE
YASHODA SHIKSHAN PRASARAK MANDAL



SUMMARY

- 3 Forewords of President, Vice President, Trustee of YSPM and Principal of Yashoda College of Architecture
- 9 Editorial
- 10 Events and Activities
- 19 Sports
- 21 NASA

10

- 23 YCA Student Council
- 24 Snack Bar - Rajlaxmi Babar
- 25 Business Hotel - Radhika Pawar
- 26 Corporate Office - Saurabh Nikam
- 27 Redevelopment of Satara Railway Station - Anuja Shinde
- 29 Gated Community - Omkar Jagtap
- 31 School Building- Rutuja Gandas

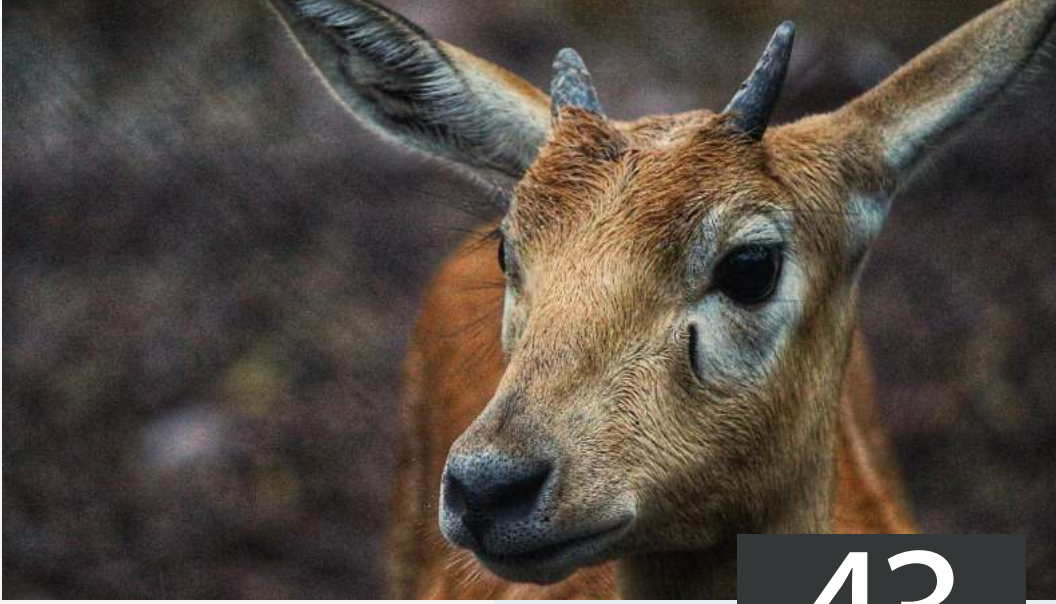


13

- 33 Village Community Center - Vasudha Nagawade
- 35 Integrated Fruit Park - Meenakshi Borkar
- 37 Devrai New context to Cityscape - Pranav Kokare
- 39 National Cricket Academy and BCCI Headquarter - Simran Mulani
- 41 Cultural Convention Center - Vaishnavi Jagdale
- 43 Photography
- 44 Paintings and Illustration
- 47 Sketches



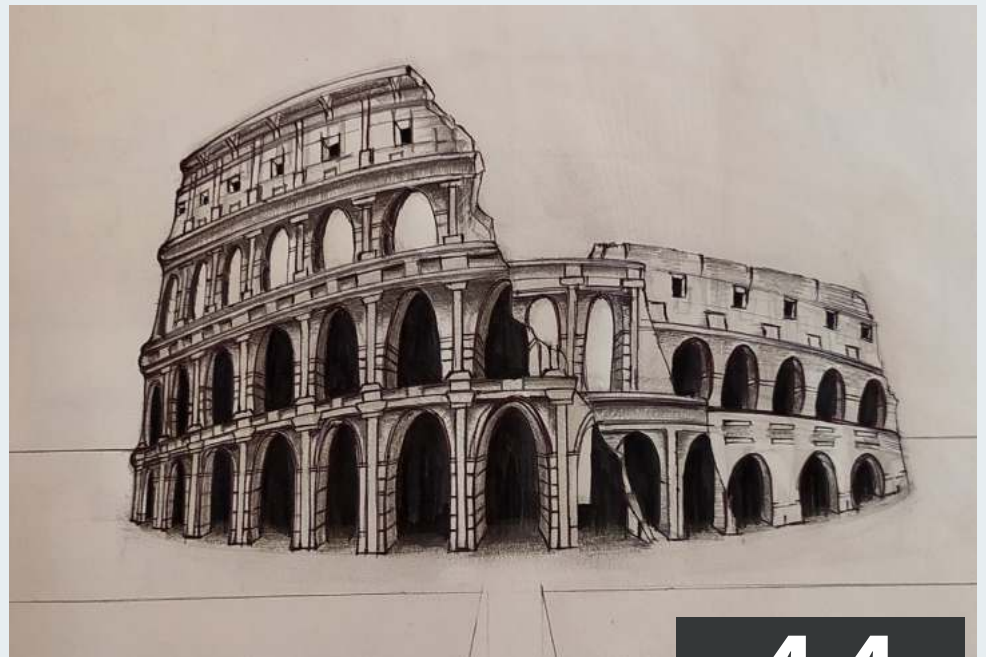
17



43

- 49 Pateshwar Temple Complex Documentation
- 53 Social aspects of Devrai's in Maharashtra
- 54 Feasibility Study of Adaption and Reuse of Landfill Site
- 55 Adaptive reuse and redevelopment at Ajinkyatara fort precinct
- 56 Exploring the Prospects and infrastructure advancements for religious tourism circuits in Maharashtra
- 57 My Perspective -Ar. Arti Kokare

- 58 La Avrisa - Ar.Siddharth Tarale
- 59 Art Center - Ar. Atharva Pore
- 61 Gade Heights - Ar. Renuka Raut
- 62 Crafting Architectural Visions: The Entrepreneurial Odyssey- Ar. Shaunak Kadam
- 63 Rayat Sevak Co-op Bank - Ar. Suhas Talekar , Ar. Sujata Talekar
- 65 Nandadip Wada - Ar. Swarali Sagare
- 67 Manas - Ar. Gautam Bhurke



44



Architrail Magazine
 Yashoda College of Architecture
 Address; 244, NH-4 Wadhe Phata Satara
 Phone Number: 02162 271242
 E-mail: yca_info@yes.edu.in
 Website: <http://ycoa.org.in/>

Yashoda Shikshan Prasarak Mandal
 Phone Number
 E-mail
 Website

60



Dear Readers,

Welcome to the latest edition of our YCA's biannual magazine- Architrail. Our world is in a constant state of evolution, and so is the field of architecture. The cover of this edition serves as a glimpse into the dynamic landscapes of our creative minds, where blueprints meet inspiration, and imagination takes flight where we are aspiring towards a better sustainable future mixed with traditions and culture.

As we flip through these pages, we invite you to join us in celebrating the vibrant tapestry of architectural events that happened in past years. In the featured student's articles, we delve into the multifaceted aspects of architectural design. Explore the symbiotic relationship between form and function, as our student, alumni and faculty projects showcase the incredible talent and diverse perspectives that define our college. A few research paper abstracts are also presented which showcases the YCA's research side. The featured work on back page showcases the skills of our faculty but also exemplify our collective dedication to breakthrough after pandemic and create a positive impact on the world through thoughtful design.

We hope you enjoy this visual and intellectual journey through the world of architecture. May the stories within these pages inspire you to see the built environment with fresh eyes, appreciate the delicate balance between functionality and aesthetics, and understand the transformative power that architecture holds in shaping our lives.

Happy reading!

Sincerely,

AR. SNEHAL SHEDGE



EDITOR

Ar.Snehal Shedge

Ar. Omkar Bhosale

EVENTS & ACTIVITIES

Ar.Renuka Raut

PROOF READING

Ar.Rakhi Begampure

ASSISTANT STUDENT EDITORS

Ms. Aarti Neverekar -TY

Ms. Kalyani Narkar-SY

COVER PAGE

Mr. Pranav Kokare- FiY

BEHIND THE CURTAIN DYNAMO

Miss Supriya Chorge

Mr Tushar Pisal

STUDY TOUR- HIMACHAL PRADESH - CHANDIGARH- AMBALA-SARAHAN-SANGLA-KALPA-SHIMLA



ROCK GARDEN CHANDIGARH VISIT



KALPA HIMACHAL VISIT



In architecture tours to different places of architectural interest are necessary for comprehensive architectural education. With the same vision along with the regular academic program, the "Yashoda college of architecture encourages the students with ongoing study tour to various cultural and historical importance places every year.

The study tour was planned to Himachal Pradesh, Shimla, Chandigarh so that the students should understand and explore urban design and modern structure. Even students should understand the Ancient history the monumental Scale, planning and symmetry of the structure.

The students have studied the historical structure and during the study tour they will observe the structure. It will be helpful to analyze the structure and help in planning



STUDENTS AT SARAHAN



EVENTS & ACTIVITIES



Students at Laurie Baker Center, Kerala



Students at Padmanabhamswamy Temple, Thiruvananthapuram, Kerala



Students at STM Documents Engineering Pvt Ltd, Kerala



Students at Traditional house in Cochin for Street Mapping

STUDY TOUR KERLA AND PATESHWAR TEMPLE COMPLEX RESEARCH AND CONSERVATION DOCUMENTATION WORK



E-seed is working on research and documentation work of pateshwar temple complex located in satara for this work E-seed approached YSPM's Yashoda College of Architecture and requested for help in doing measure drawing of pateshwar temple complex. Team from Yashoda College of architecture visited site and understood the requirements in detail. For this work E-seed appointed Ar.Saurabh Joshi – conservation architect to guide students and professionals from YCA. On first day Ar.Saurabh Joshi visited YCA to guide students for Pateshwar Temple Complex Research and Conservation documentation work. The main aim of this documentation workshop is to increase understanding of a heritage site amongst students and how measure drawing of a heritage site is to be done.

EVENTS & ACTIVITIES

Case Study of Panshil Towers by fourth year Students



Kalakari Workshop



Ice breakers



Ice breakers



Eseed Kolhapur



Dhruva Baruah



Brick Workshop



Brick Workshop



on OnePlus

DAYS CELEBRATION



Cultural Events Are Held In College As Per The Theme, Different Days Are Celebrated Through These Colourful Week In College. These Fun-filled Days Bring Out The Hidden Talent Of The Students And Proactively in different cultural environments



WORLD ARCHITECTURE DAY - 2023




World Architecture Day is celebrated on the first Monday of October every year. This year it occurred on the 3rd of October under the theme "Architecture for Resilient Communities"... World Architecture Day 2023 marks the seventy-fifth anniversary of the founding of the UIA, which was established in 1948 to unite architects everywhere. The International Union of Architects (UIA), the only global organization representing the world's 3.2 million architects. By choosing a different theme for reflection each year, World Architecture Day aims to draw the attention of professionals and the public to issues concerning cities and housing.

At Yashoda College of Architecture we celebrate World Architecture Day as a series of Architectural Presentations in which different leading professionals in the industry are called for. This year's series included presentation of Ar. Prasanna Daga, a distinguished architect with a wealth of experience, took the stage to

share insights, ideas, and innovations in the field of architecture field. Ar. Pranit Bora, known for his innovative photography concepts, captivated the audience with a compelling presentation.

Ar. Rohit Jagdale brought a unique perspective to the event, discussing sustainable and eco-friendly architectural practices. Ar. Gautam Bhurke shared his knowledge about the latest contemporary advancements in architecture. Ar. Shree Mahajani, known for his distinctive design aesthetics, discussed the intersection of art and architecture in regards to Architectural travel. The World Architecture Day celebration at YCA was an inspiring and enlightening event, providing students and professionals with valuable insights and fostering a deeper appreciation for the art and science of architecture.




YSPM'S
YASHODA COLLEGE OF ARCHITECTURE, SATARA
Celebrates


WORLD ARCHITECTURE DAY

Architecture for Resilient Communities


Dialogues with:




Ar. Shree Mahajani
Studio M+M




Ar. Gautam Bhurke
Saga Design Studio



Ar. Rohit Jagdale
Avartan Design Studio



Ar. Pranit Bora
Pranit Bora Studio



Ar. Prasanna Daga
Storyboard Designs

In esteemed presence of

Hon. Prof. Dasharath Sagare
President
YSPM, Satara

Hon. Prof. Ajinkya Sagare
Vice President
YSPM, Satara

Host
Ar. Suhas Talekar
Principal
Yashoda College of Architecture, Satara

Day & Date : Tuesday 3rd October 2023 Time : 2:00 PM
Venue : Yashoda College of Architecture

Faculty Co-ordinators
Ar. Snehal Shedge - 9665550226
Ar. Renuka Raut - 9561949409

Student Co-ordinators
Mayur Chothe - 9503882244
Prajakta Pawar - 8080810346



EVENTS & ACTIVITIES

CALLIGRAPHY WORKSHOP



A Calligraphy workshop had been arranged for students to explore different skills in the field of architecture. The workshop was held by Ar. Gautam Bhurke.

Calligraphy is a visual art related to writing. It is the design and execution of lettering with a broad tip instrument, brush, or other writing instruments. A contemporary calligraphic practice can be defined as "the art of giving form to signs in an expressive, harmonious, and skillful manner".



CASE STUDIES AND SITE VISITS



Case study and site visits are arranged throughout the year for various subjects like architectural design, building construction and management, surveying and levelling, building services, aesthetics, visual art appreciation, etc. The intention of site visits is to give students hands-on experience and knowledge about building industry.



EVENTS & ACTIVITIES

ZONAL NASA



Yashoda College of Architecture participates in NASA so that students would explore the work of other college get the experience of workshop and seminar by expertise in the field of architecture.

64th Year Annual NASA Convention for 2022 School of Architecture, CHRIST (Deemed to be University), in collaboration with NASA (National Association of Students of Architecture), India are conducting the enthralling 64th Year Annual NASA Convention for 2022. Scheduled from 01-04 June 2022, this event witnesses over 4700 students in attendance who will get the opportunity to interact with renowned architects and industrialists of the nation's architectural fraternity. 65+ workshops, 15+ seminars, 10+ masterclasses, and 3+ keynotes, as well as a plethora of on-the-spot events, cultural events and cultural competitions are scheduled to be held during the convention.

A concert by the famous Indian Playback Singer Benny Dayal on the second day of the convention only adds to the grandeur of this event. This creates a space for students to explore, create, learn, unlearn and interact in convention.



EVENTS & ACTIVITIES

PATESHWAR DOCUMENTATION

Pateshwar is a place with very rich culture and historical background, heritage documentation certificate program offered by YCA are tailored specifically to the documentation and preservation of this site. The program focuses on developing skills and knowledge related to the temple's unique history, architecture, and cultural significance, as well as the challenges and opportunities involved in documenting and preserving this heritage site. Students were encouraged to explore the documentation, art and architecture of this pilgrimage site through sketching



STUDENTS TAKING TEMPLE MEASUREMENT

ALL THE PARTICIPANTS ALONG WITH THE GUEST AR. SAURABH JOSHI



BPMS WORKSHOP

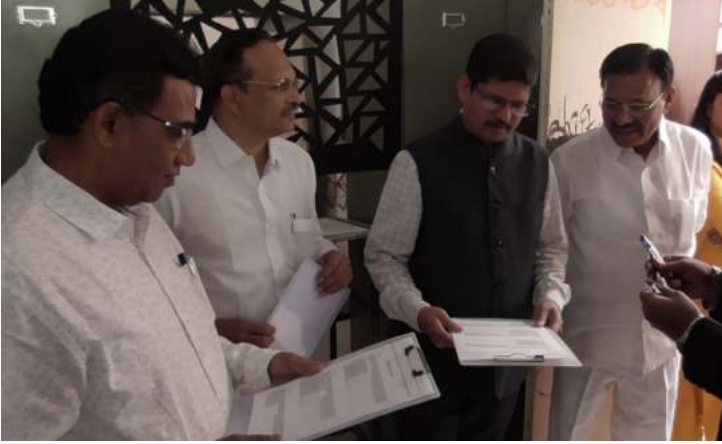
Building plan management system (BPMS) covers all the councils across Maharashtra for automation and implementation of Building permissions and all workflow based systems used in the councils for different types of permissions like Plinth, occupancy etc. Solution has an innovative touch with the 3D models being prepared for the plans submitted and mobile based BPMS Connect application for inspections and real time updates to stake holders.

To understand and learn this application is necessary for all professionals related to construction Field. Yashoda College of architecture satara in collaboration with Indian institute of architects Satara Centre (IIA) took initiative



EVENTS & ACTIVITIES

EXHIBITION 2021-2022- "BEYOND"



The exhibition plays a very important role for Architecture students as the work done throughout the year by the students is exhibited. The exhibition was held on 19th to 22nd April 2022 and was inaugurated by an eminent personality and president of the Institute Prof. Dashrath Sagare and Ar. Sudhir Shinde.

The YSPM educational organization provides various facilities, technical support, and human resources for the development of students. Each year has a different theme, for 2022 the theme was "BEYOND".

"Beyond" is all about pushing the boundaries of design and exploring new frontiers in architecture. It's a celebration of innovation, creativity, and thinking outside the box. It is to get inspired by ground breaking ideas and visionary concepts that go beyond the conventional. The exhibition component of BEYOND 2022 involves showcasing the work of students from 1st to 5th year. It is the most awaited event for the students.



EVENTS & ACTIVITIES

SPORTS



The Annual Sports of YSPM's Yashoda College of Architecture, Satara was scheduled from Friday 11th January 2019 to Saturday 12th January 2019. The Chief Guest for the sports events was Prof. Ajinkya D. Sagare (Vice-president YSPM), and Ar. S. S. Talekar, Principal, Yashoda College of Architecture.

The event started with our glorious tradition Ground Poojan and Flag hoisting.

The students showcased their unity and physical strength in running, shot put and javelin throw. The students of F.Y., S.Y. and T.Y. displayed their energy, enthusiasm and team work through a wonderful opening in the events. It was a great sight indeed to watch the enthusiastic students.

The sense of sportsmanship and enthusiasm students displayed surely increased the excitement of the audience.

The general championship of 2019 was bagged by second year.



SPORTS WINNERS 2022

Girls Cricket
Winner Team
ONYX HOUSE

Simran Shahajahan Mulani
Gitanjali Rajendra Jagtap
Priyanka Sanjay Bhosale
Snehal Deepak Mandhare
Shraddha Chandrakant Narkar
Nisha Vijay Yadav
Sharayu Annasaheb Supekar
Jyoti Dattatraya Dhayagude
Prajakta Prakash Patil
Tanvi Manoj Chakanka

Girls Kabbadi
Winner Team
RUBY HOUSE

Kajal Sunil Darekar
Mugdha Sanjay Jadhav
Sayali Vilas Deshmukh
Manali Uttam Sawant
Anuja Rajendra Shinde
Aishwarya Vijay Gondge
Shravani Vikas Bhosale

Girls Throw Ball
Winner Team
ONYX HOUSE

Snehal Deepak Mandhare
Priyanka Sanjay Bhosale
Prajakta Prakash Patil
Simran Shahajahan Mulani
Shraddha Chandrakant Narkar
Jyoti Dattatraya Dhayagude

Girls Basketball
Winner Team
JASPER HOUSE

Pujari Rutuja Basavraj
Shweta Suresh Dhayagude
Radhika Shankar Pawar
Topale Neha Sharad
Vrushali Sandeep Nangare
Arati Dattatray Nevrekar

Boys Cricket
Winner Team
QUARTZ
ONYX
HOUSE

Omkar Rajendra Jagtap
Ganesh Anil Songate
Shivam Madhukar Magdum
Siddhant Dilip Agalave
Tushar Yadav
Vaibhav Uttam Jadhav
Abhishek Vijay Thorat
Nikhil Mahadev Gadavi
Pranav Balasaheb Kokare
Suraj Mahesh Kadam
Mayur Hanmant Chothe

Boys Kabbadi
Winner Team
RUBY HOUSE

Atharva Sanjiv Mehata
Nrupesh Prasanna Gurav
Swapnil D.Dharmadhikari
Aniket Ananda Gadekar
Yashraj Dattatray Zanjurne
Suraj Mahesh Kadam

Boys Volleyball
Winner Team
JASPER HOUSE

Dhiraj Dinkar Patil
Abhishek H. Kumbhar
Romi Rajan Bhoodatt
Atharva Sanjiv Mehata
Nrupesh Prasanna Gurav
Abhinav Abhay Jadhav

Boys Basketball
Winner Team
QUARTZ HOUSE

Ganesh Anil Songate
Shivam Madhukar Magdum
Tushar Yadav
Siddhant Dilip Agalave
Vaibhav Uttam Jadhav
Mehta Atharva Sanjiv



Sport Name	Team members / Individual	Class	Winning Status
Badminton Boys	Tushar Yadav	F.y.B.Arch	Winner
	Abhishek Vijay Thorat	Fi.y.B.Arch	Runner up
Badminton Girls	Shweta Suresh Dhaygude	Fi.y.B.Arch	Winner
	Simran Shahajahan Mulani	Fi.y.B.Arch	Runner up
Tug of War Girls	ONYX CLUB		Winner
	QUARTZ CLUB		Runner up
Relay Boys	RUBY CLUB		Winner
	ONYX CLUB		Runner up
Relay Girls	JASPER CLUB		Winner
	ONYX CLUB		Runner up
Running 100m Boys	Aniket Ananda Gadekar	F.y.B.Arch	Winner
	Nrupesh Prasanna Gurav	Fi.y.B.Arch	Seond
	Swapnil D. Dharmadhikari	Fi.y.B.Arch	Third
Running 100m Girls	Neha Sharad Topale	Fi.y.B.Arch	Winner
	Vrushali Sandeep Nangare	T.y.B.Arch	Second
	Simran Shahajahan Mulani	Fi.y.B.Arch	Third
Chess Boys	Dhiraj Dinkar Patil	Fi.y.B.Arch	Winner
	Atharva Sanjay Mehata	Fi.y.B.Arch	Runner up
Carrom	Nikhil Mahadev Gadavi	Fi.y.B.Arch	Winner
	Prajakta Prakash Patil	S.y.B.Arch	Runner up



NATIONAL ASSOCIATION OF STUDENTS OF ARCHITECTURE



Stay true to the spirit and ideas of NASA: a national platform for architect's students to meet, exchange thoughts, exhibit and learn. Participate whole heart and dedication there is a lot to from each other in the process.

Shravani Bhosale
Unit Secretary 22-23
Yashoda College of Architecture

The National Association of Students of Architecture (NASA) is a dynamic platform that unites aspiring architects, fostering creativity, collaboration, and innovation within the field. Within the intricate structure of NASA, the role of a Unit Secretary is pivotal in ensuring the smooth functioning of this vibrant community of student architects. The organization serves as a hub for students across the country, providing a space for learning, networking, and the exchange of ideas. As a Unit Secretary within NASA, one plays a crucial role in maintaining the synergy that propels this dynamic community forward. Being a Unit Secretary in NASA comes with its set of challenges, including managing diverse opinions, coordinating across different architectural schools, and balancing academic commitments. However, the rewards are immense, with the opportunity to contribute to the growth of aspiring architects, foster a sense of camaraderie, and witness the realization of innovative ideas within the community. In the dynamic realm of architecture, the National Association of Students of Architecture plays a pivotal role in shaping the future of aspiring architects.

ANDC TROPHY

INTRODUCTION

India is one of the most religiously & ethnically diverse nations in the world, with some of the most deeply religious societies of culture.

Maharashtra is a state in the Western peninsula region of India occupying a substantial portion of Deccan plateau. Maharashtra is famous for its culture & beauty.

Satara was the capital of Maratha kingdom spreaded over 14 lakhs square kilometer. This land has rich heritage several great warriors, kings, saints and great personalities create their historical evidence in the history of Maharashtra. This city is situated on the slope of satara fort popularly known as 'Ajinkyatara'. The city gets its name from the seven forts (sat-tara) which are around the city. Satara city is located near the confluence of the river Krishna and its tributary, the Venna. The city lies on the western side of the Deccan plateau.

Proposed site

MAPPING

Being centrally located & a shopping hub many hawkers selling various items are seen here. 15% of the total number of the hawkers are fruit sellers, 12% are the toy sellers, 25% are vegetable sellers, while 32% and 32% are cloth and cosmetic sellers respectively.

BUILT/UNBUILT AREA

Rajwade has less green cover. Most of vegetation is near Gut bang & Rajwade around. Due to high levels of pollution the vegetation & flora becomes a necessary element of design.

CHAUPATI

Food stalls

Food stall & Dining Area

Parking four wheeler parking

Parking Two wheeler parking

Dinning Area 400 persons can use dinning area

card counter One trust issue can be paying some amount

food stalls There are 40 food stalls

Entry/Exit-1 Incoming from two major roads.

SITE CONCEPT

Fountain

RAJWADE

Green Space

Cultural space

Plan of Rajwade

The new palace was built in 18th century. As this rich a place and heritage. So, this palace has lost culture on with this space, new...

ANDC 2022-23 65ANDC -218 NASA

ANDC 2022-23 65ANDC 219 NASA

ANDC 2022-23 65ANDC -219 NASA

NATIONAL ASSOCIATION OF STUDENTS OF ARCHITECTURE

TEXT

Rajwada

Rajwada

Detail of Column at Rajwada

Chaupti at Rajwada

ANDC 2022-23 -219 NASA

MAPPING

BUILDING AGE

- 0-50 years old.
- 50-100 years old.
- 100-150 years old.
- 150-200 years old.

Rajwada witnesses the architectural growth over a long period as the area has buildings which are pretty old along with the modern time buildings. 25% of buildings in the area are 0-50 years old, 30% are 50-100 years old, 25% buildings are 100-150 years old while 20% buildings are 150-200 years old.

VEHICULAR MAPPING

- Two wheeler parking
- Four wheeler parking
- Kickshaw parking

Rajwada is a densely crowded area. It lies in the heart of Satara City, Chaupti, shopping street, Ajinkya Sampati & Panchmukhi Ganpati are various attraction of the area. And so this area has a heavy vehicular movement. Two wheeler parking occupies a large number i.e. 60% of the total vehicular mapping.

ANDC 2022-23 -219 NASA

DA

Cultural Space
Interactive place which includes activities related to Indian culture reflecting Architecture of Maharashtra.

MUSEUM
Space for Collection of valuable and historical articles. To replace historical background of Chh. Shivaji Maharaj, Plural frames, photos and timeline is exhibited. In the courtyard water body is provided along side the pathway leading to the throne.

Open Space

Memorial

Key Plan

ANDC 2022-23 -219 NASA

RAJWADA

Green Space
At the centre for aesthetic purpose a series of steps with irregular form has been designed as a material marble tiles are used.

Sitting Area

Open Space
A landscaping is designed besides Rajwada palace leading to the water body having a memorial of Chh. Shivaji Maharaj.

Memorial near Water body.

Pathway
Pathway for the memorial is designed with archways and trees along both the sides.

ANDC 2022-23 -219 NASA

GREEN ROOF DESIGN

The existing bus stand area has been redesigned into multi-functional cultural public space. Many aesthetically pleasing elements have been provided which makes the space more interactive. Human interaction & connectivity with nature has increased due to inclusion of biophilic elements and a variety of flora.

Sitting Area
seating is provided in fluid form rather than providing a regular form for aesthetic purpose. Seating will be made out of concrete with wooden finish which make it durable and better resistant to all weather conditions.

Amphitheatre
It is designed to relax under the shade of trees and to enjoy the view of Lake. The steps have a unique design which go on tapering.

Key Plan

ANDC 2022-23 -219 NASA

RECREATIONAL SPACE

Fountain

For aesthetic purpose to make atmosphere cool and to enjoy the sitting around it.

Open spaces & sittings
Open spaces & sitting are provided for people to connect & interact with the nature and its beauty.

Fountain detail

ANDC 2022-23 -219 NASA

Students Council



Ms. Anuja Shinde
President - Students Council
Yashoda College of Architecture

Dear friends,

I Anuja Rajendra Shinde, President of YCA's Students' Council, am reflecting on a journey woven with diverse experiences, joys, enthusiasm, and invaluable growth through mistakes. As a student council we serve as a major link between faculty and students. We indulge in solving even the slightest to mammoth issues of students.

Grateful for the collective effort of every council member, ensuring smooth operations and overcoming challenges. Our focus is always on your well-being, community engagement, academic support, professional development and creating memorable experiences

The journey of being this President ship has been wonderful, indulged with a variety of experiences and emotions, triumphs and even failures. In this vibrant community of learners, I'm thankful for your collective enthusiasm, dedication, and support that created an environment of growth and friendship. Whether it's collaborating on projects, working on exhibition, fighting against each other in sports, sharing insights in class, or simply offering a friendly smile in passing, each contribution, big or small, has immensely shaped our shared experience. Your resilience, passion, and commitment to excellence inspire me daily. It is the combined efforts of every individual in this diverse student body that make our educational journey richer and more meaningful.

Thank you for being a source of positivity and kindness. It had been an incredible journey of leadership for the past years and wish you all continued success with the next student's council.

Ms. Anuja Shinde
President Students Council
Yashoda College of Architecture



Mr. Saurabh Nikam
Vice- President
Students Council



Mr. Vaibhav Jadhav
General Secretary
Students Council



Ms. Sayali Thorat
Committee Member
Students Council



Ms. Radhika Pawar
Vice- Treasurer
Students Council



Mr. Ravikiran Chavan
Vice- Secretary
Students Council

SNACKS BAR

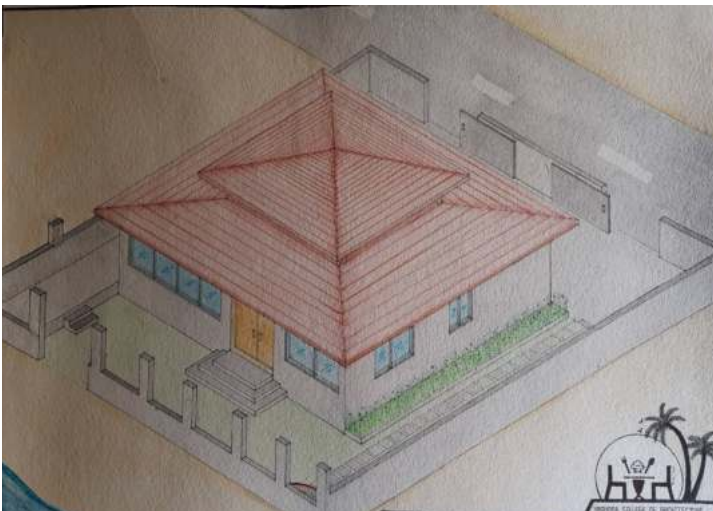
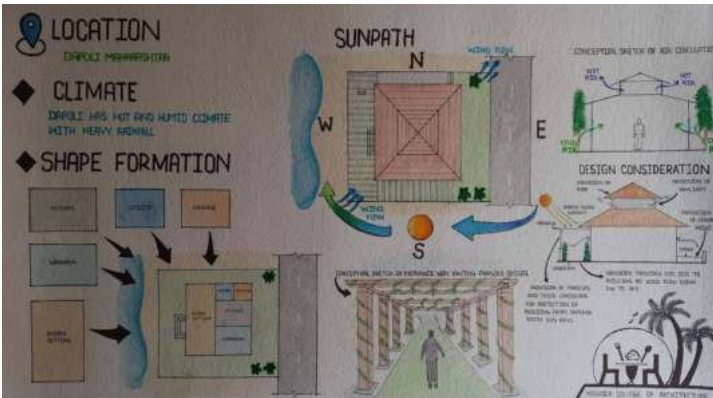


Ms. Rajlaxmi Babar
FY B.Arch

Designing The Snack Bar on beach side was very good experience. The project requires something different yet useful and productive. Everyone's perspective and needs are different regarding use of Beach area and accesses. People want their space to enjoy by their own way.

This project is at Dapoli near beach. Climate of Dapoli is hot and humid and location of site is in heavy rain fall area in maharashtra which is known as Kokan. The site has access on front side with road and the rear side of plot is facing on beach side with very scenic view.

The Entry of snack bar was facing on beach side with the frames of pergolas, so at time of entering the snack bar you can enjoy the beach breezes also the pergolas protect the entry from south side harsh sunlight. The snack bars roof is designed as a sloping roof accordingly geographical condition of heavy rainfall in which the two sloping roof are placed on each other and between the two roof the skylight were provided vertically for functioning of hot to cool air. the outdoor sitout were provided on beach side for the visitors and the landscape were blended with beach sand so that visitor can feel that their enjoying beach atmosphere inside snack bar.



Business Hotel at Satara



RADHIKA PAWAR
SY B.Arch

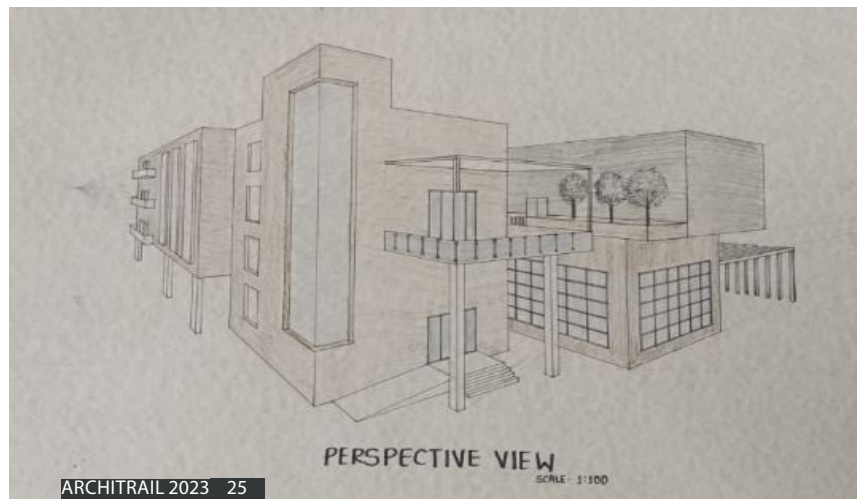
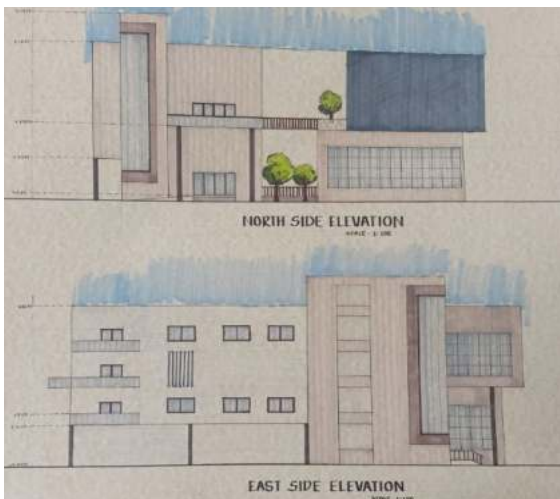
The site is located on Satara Koregaon road fronting the state highway. Total site area is 3500 sq.m, and site has a access from two sides

Concept – Commercial Courtyards.

The Business hotel in Satara is the crucial requirement for the visitors. the site is located on very prime location in front of the government medical College and hospital, When it comes to commercial hotel building usually we go for the luxurious things, but in mind i decided to go with the traditional courtyard concept which indicates my commercial courtyard through my planning. In Bussiness hotel planning i designed the two big courtyards at core of building. The other requirements and rooms were designed in the periphery of courtyard which gives the visitors a integrated landscape feel throughout the building. All the activities are planned accordingly courtyard position so that everyone can feel the outside environment inside the bussiness hotel.

The plan evolved by the process of providing more central and approachable interaction spaces and open courts will keep the place properly ventilated areas to tackle the humidity in atmosphere.

All the highlights are the interaction spaces and the forms that blend in nature as one so the positives enhances the area overall.



Corporate Office



Saurabh Nikam
TY B.Arch

The design problem was a Corporate office at Kesurdi Pune, as Pune is evolving as corporate hub of India. The Design Solution was evolved by arranging diagonal cubes on north side facing so that a whole building can get good ventilation.

By adding vertical breathing spaces and connectingz the staircases and bridges from that open spaces,the building beacome more breathable in the environment.

The Semi-Public , Public and Private Spaces are divided vertically as per their priority wise use , The design solution was to connect the all spaces vertically as well as horizontally through the breathing spaces.

The BEAUTY element for my Corporate office design is its curvature elevatory spaces which act as connecting spaces to outside and also as a elevation treatment for the structure.



Redevelopment of Satara railway station



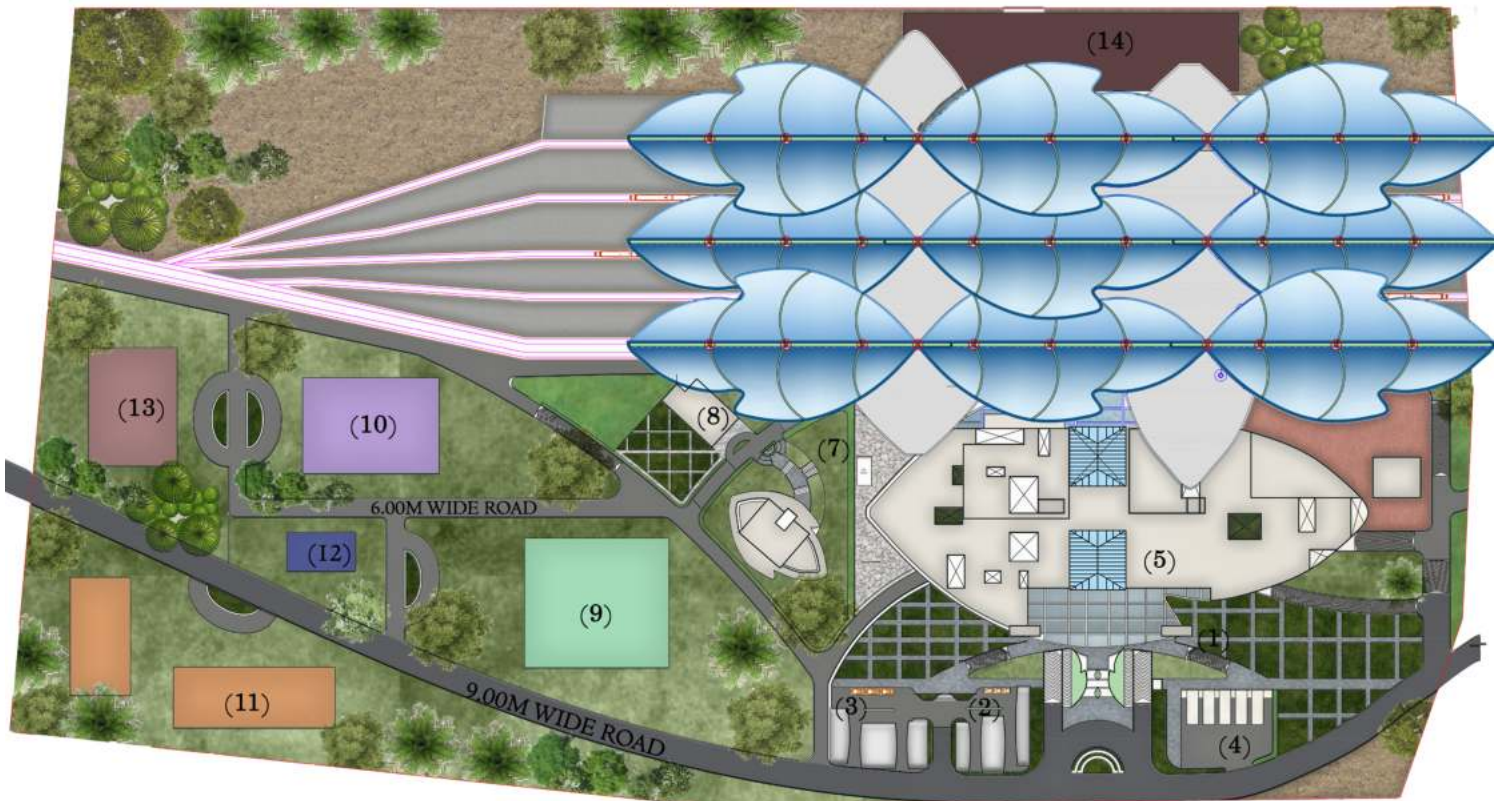
Ms. Anuja Shinde



The site is located 6.9km away from satara bus stand satara district, located in the western part of maharashtra, india, is a region of natural beauty and historical significance. the district's central hub, satara city, is nestled amidst seven picturesque mountains, creating a stunning landscape. the city's transportation infrastructure includes the satara railway station, situated approximately 6.9 km from the satara bus stand on the satara pandharpur road.

In my design solution, i have planned accordingly Biomimetic architecture concept which is a multi-disciplinary sci-entific approach to sustainable design that goes beyond using nature as inspiration for aesthetics but rather deeply studying and applying construction principles that are found in natural environments and species.

Also Forms Follows Function concept has been implemented in this design solution, which follows design or a style or a shape of an object follows the function of the object. leaves have intricate vein networks that efficiently transport water and nutrients. this structural efficiency has inspired architects to create building designs with optimized support structures in which veins acts as roads.



SITE PLAN

SCALE : 1 : 750



LEGENDS :

- | | |
|-----------------------|---|
| 1. ENTRANCE | 8. PHC DEPARTMENT |
| 2. TAXI PARKING | 9. ASSISTANCE / CLASS / WORKERS REST ROOM |
| 3. RIKSHAW PARKING | 10. SECOND CLASS OFFICER RESIDENCE |
| 4. ARCHITRAIL 2023 28 | 11. PEONS REST ROOM |
| 5. ADMIN BLOCK | 12. CLUBHOUSE |
| 6. PLATFORM | 13. CLASS ONE OFFICER |
| 7. LOCO PILOT | 14. WAREHOUSE |

Gated Community At Pune



Omkar Jagtap

Gated Community is a concept of co-housing defines create community not in terms of physical collection of homes, but as a social collection of individuals, the aim behind concept is to provide supportive social environment for like minded homeowners.

As Pune is considered as a thriving vibrant metropolis, a center of academia, business and also known for cultural activities such as classical music, theatre, sports, literature and architecture. At the outskirts of pune , area of ravet is a developing suburban neighborhood along with the pawana river also the home of modern apartment where most of the apartments exist isolated and at the other hand some of the apartments falls under the community living called gated community.

Talking about site which has area is about 44,000 sq.m. with adjacent pawana river at northern part of site and at the eastern side of the site all the way NH48 gives well connectivity and approach to the site.

While designing Co-housing community, it is considered that daily essentials and pre-school should be at a walking distance from the houses. Some of the factors considered that the campus is completely pollution free as vehicular movement eliminated around the houses and designed in the basement which will brings complete pedestrian access all over the campus, open spaces between the housing designed deliberately to make design little porous. In this gated community housing we have designed apartments, villas, clubhouse, commercial complex etc.





7.5M WIDE ROAD

MASTER PLAN

LEGENDS

1. WATCHMEN CABIN
2. SHOPPING COMPLEX
3. VISITOR'S PARKING
4. APARTMENTS
5. CHILDREN'S PLAY AREA
6. CLUBHOUSE
7. BASKETBALL COURT
8. CLUBHOUSE PARKING
9. VISITORS PARKING
10. HOSPITAL
11. VILLA
12. TRANSFORMER
13. TEMPLE
14. KINDRGARDEN
15. CRICKET NETS
16. TENNIS COURT
17. WATER BODY
18. AMPHITHEATRE
19. CYCLING TRACK
20. SEATING AREA
21. RIVER PROMENADE
22. SEWAGE TREATMENT PLANT
23. JETTY



NAME :- OMBAR R. JAGTAP
 CLASS :- Fd. Y. B. ARCH. ROLL NO. :- 05
 SUBJECT :- AD-VII ACADEMIC YEAR
 SCALE :- 1:20

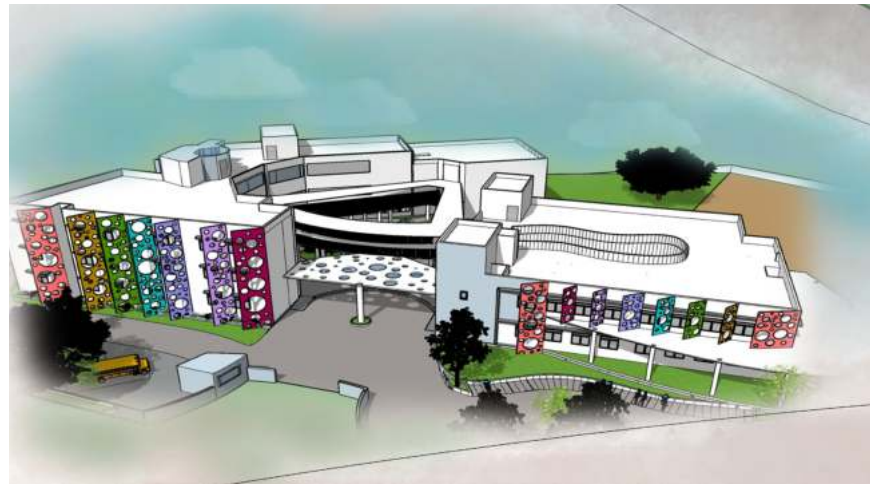
School Building Design At Wai, Satara



Rutuja Gandas
T.Y. B.Arch

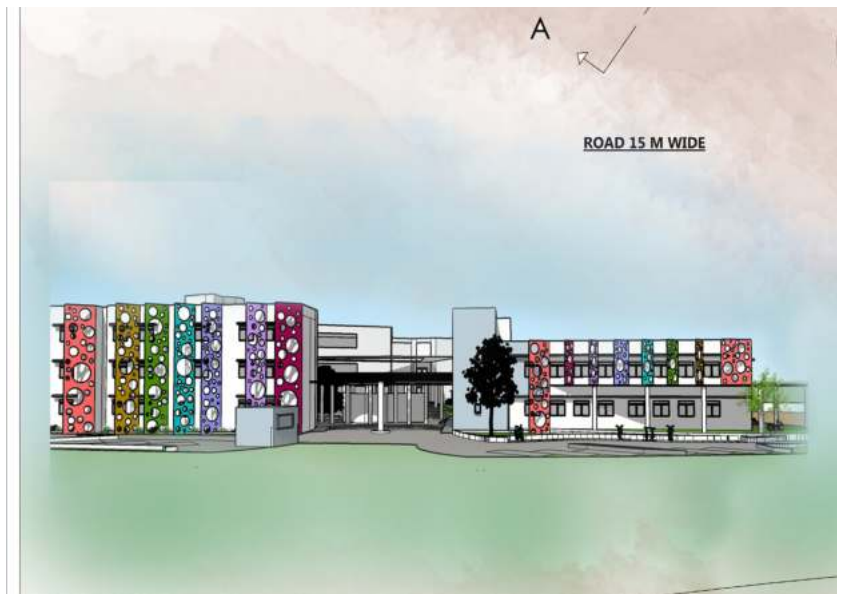
The design problem was a School building, the site was located in Wai Maharashtra, As the design is for the institute i choose the Design solution as fragmentation style, in which the school spaces were divide into three parts such as Primary section(Kindergarden), Secondary section(1st to 10th class), Public areas.The all three parts are connected with easy accesses through bridges and staircases.

The central part of building is designed as Amphitheater and Recreational space which act as breathing space for the School Building. The Classrooms and other activities are planned in the surrounding of open courtyards which keep the spaces connected to outside nature. The Facades and walls are treated in colourful panels so that the school building can reflect inviting character for the students.





LEGENDS	
①	BUS PARKING
②	TWO WHEELER PARKING
③	FOUR WHEELER PARKING
④	BICYCLE PARKING
⑤	WATCHMAN CABIN
⑥	PRIMARY SECTION
⑦	CANTEEN
⑧	SECONDARY SECTION
⑨	AMPHITHEATER
⑩	KITCHEN GARDEN

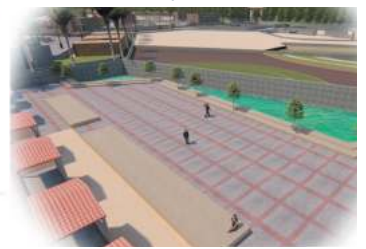


YASHODA COLLEGE OF ARCHITECTURE
 NAME - RUTUJA S. GANDAS
 CLASS- T.Y.B.ARCH ROLL NO :- 04
 SCALE :1:200

A village community center an organization, building center preserve the community aspects as well as cultural aspects of village which is known from ancient time. in this project i want to design such a space where people can celebrate their tradition or a culture and they can perform all other activities. There will be the space which connected to the all Village people. Community center are spaces that bring the community together in one area and provide numerous activities and events to connect the community with their village and each other. Having facilities such as recreational area and seating area make it a great place to meet the needs of any community, And allow the public to move it forward for success.

In current situation cultural aspects of village are lacking. Which means that all festivals or cultural events get celebrated individually by people or very few people gathers to celebrate the event. For these reasons lacking our culture aspects and also community aspects. Also, the people are not interacting with each other and mostly generation gap is most important point in lacking of these aspects. To preserve the village community and village culture is must important to us to guide the next generation. Also there is need to decrease the generation gap and to increase the communication between people for that purpose, The main motto of the village community center is to inspire people to celebrate all events together and evolution of our community and cultural aspects of village.

While promoting the communal and cultural enhancement of the village. creating the interaction spaces to increase the communication between people will be focus of village community center. The center will provide a place for all community celebrations or various occasions and traditions, It will boost up unity and create a sense of brotherhood between people of village. As there is a need of a place for public meeting for the citizens on various issues of village. Village Community center act as a social awareness place among the people and it will provide a entertainment and recreational facility for rural mass.

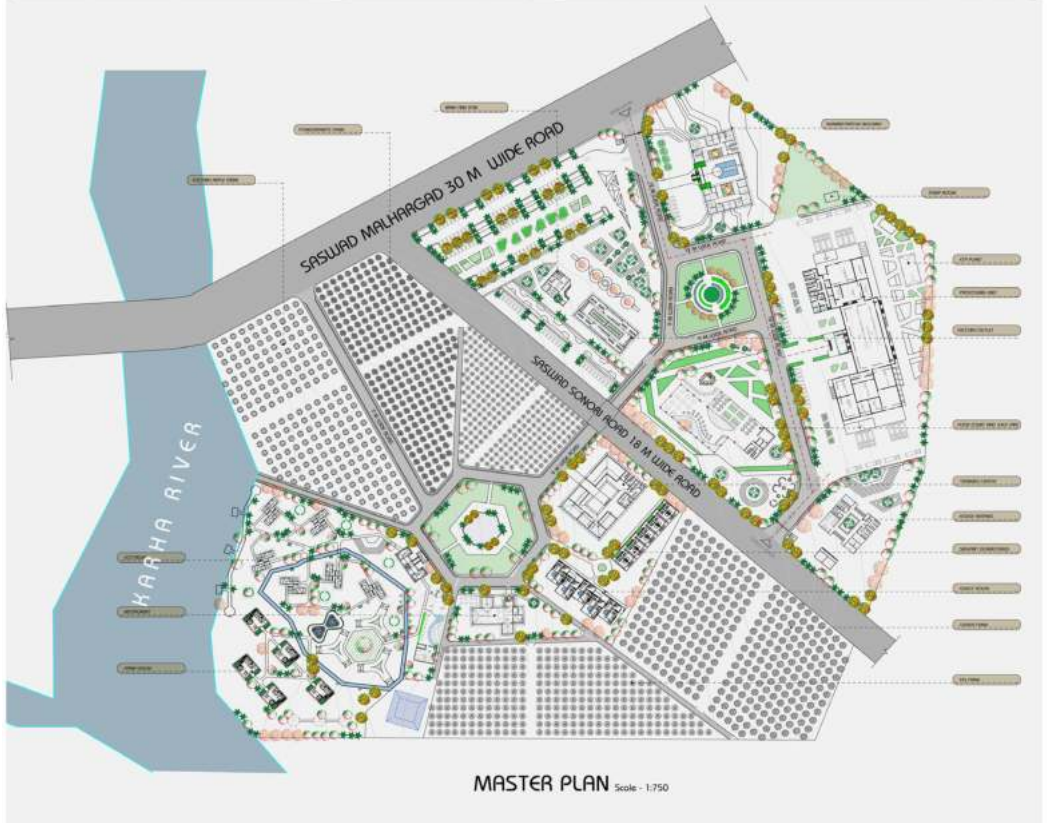


Integrated Fruit Park (PRA-KRIYA)



Meenakshi Borkar
FI.Y B.Arch

MASTER PLAN



THE CHANGE FROM FOOD COLLECTION TO FOOD PRODUCTION TO FOOD PROCESSING"

India is the second biggest nation having agricultural land, approximately 160 million hectares. India has 15 agro-climatic zones, which can support the greater part of the organic product. Regardless of that, the dimension of fruit processing in India is low (around 2.2%). Fruit play an important role in healthy nutrition and are high on the list of consumer priorities. However the major obstacle of purchasing ready-to-eat fresh-cut fruits is their short shelf life, leading to quick degeneration and decomposition of the product and undesirable look. There is a tremendous production of fruits during a shorter period. Therefore, to avoid the post-harvest loss and to extend substantial returns to processors for off season consumption so there is a need of a mass storage for fruits and to increase fruits shelf life fruit park can play a vital role

India has been bestowed with wide range of climate and physical and geographical conditions. The project will introduce the local fruits in PURANDHAR region to the market and regional culture to tourist. The development of agriculture will provide the opportunity for local farmers to increase income and lifestyle. To educate people about agriculture and its contribution to the local economy, also the integrated fruit park will provide economical support and adding a productive utilization of their raw material also introducing all activities through people learn about the agricultural production by staying in farm environment and realizing environmental conservation.

The Integrated fruit park is important for development as it connects two major economic pillars i.e. agriculture and industry. Most of the fruits from the Purandhar region have nutritional and medicinal properties Fruit processing industry provides self-employment and entrepreneurship opportunities to people.

In PURANDHAR , fruit processing offers good opportunities.

INDUSTRIAL ZONE

SASWAD MALHARGAD 30 M WIDE ROAD

SASWAD SONORI ROAD 18 M WIDE ROAD

LEGENDS -

- 1 - ADMINISTRATIVE BUILDING
- 2 - PROCESSING UNIT
- 3 - HOUSEKEEPING
- 4 - FOOD COURT
- 5 - FACTORY OUTLET
- 6 - BANK AND ATM
- 7 - TWO WHEELER PARKING
- 8 - FOUR WHEELER PARKING
- 9 - ROAD SIDE FACTORY OUTLET

SECTION AT CC

ELEVATION

HOUSE KEEPING SCALE 1:200

ADMINISTRATIVE BUILDING SCALE 1:200

SECTION AT JJ

BANK AND ATM SCALE 1:200

Devrai- New context to Cityscape



Mr. Pranav Kokare
FIY B.Arch

DEVRAI AS AN ENVIRONMENTAL INSTITUTION LANDSCAPE IN FORM OF HABITAT DEVELOPMENT FOR BIODIVERSITY CONSERVATION -

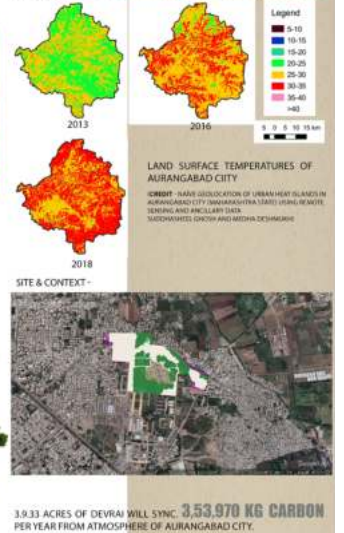


THE LANDSCAPE CONSISTING THE GRASS LAND, SCRUB LAND AND DEVRAI COMBINED WITH SMALL WATER PONDS WILL PROVIDE A RICH HABITAT TO NATIVE BIRDS, INSECTS & REPTILE SPECIES. DEVRAI WILL HELP TO CONSERVE THE NATIVE FLORA AND FAUNA OF THE REGION.

DEVRAI AS A RICH WATER SHED TOPOGRAPHY AND RAIN WATER DRAIN FLOW PATTERN -



DEVRAI TO COUNTER HEAT ISLAND PROCESS



LANDSCAPE IN FORM OF HABITAT DEVELOPMENT -



THE LANDSCAPE CONSISTING OF GRASS LAND, SCRUB LAND AND DEVRAI COMBINED WITH SMALL WATER PONDS WILL PROVIDE A RICH HABITAT TO NATIVE BIRDS, INSECTS & REPTILE SPECIES.



Devrai is a tradition in our societal culture that serves nature & society. It is the forest that functions as a social institution. Organizing & hosting Societal & cultural events by providing collective intensions to the society, is the main medium for functioning of devrai as a social institution. Its function as a social institution makes the devrai different from a vanrai (just a natural forest). Devrai's functional aspect is based on a manmade system, which is disciplined by beliefs and governed by a Deity. The concept of Devrai ensures the protection of native biodiversity & represents the symbiotic living of human and nature.

Belief system of Devrai & Its Disciplines –

The concept of devrai has been sustained through history, even the perspective towards the religious & cultural traditions have been changed with time. The reason behind the sustainability of the devrai is that the devrai has its own 'self sustaining belief system'. Conceptually it's a set belief that states if we use devrai (the forest) as resources or if we hunt the animals in devrai then the deity will curse on individual or the village. In this concept fear is the main emotion that is been used. But with time the perspective of people have been changed towards these traditions, with that the belief system also changed. The emotion of fear has been shifted to the emotion of respect of the deity.

This project is an Indian approach to urban open spaces, to promote sustainable living lifestyle in modern cultural context. It's an attempt to make a new structure of devrai based on modern cultural context, carrying its functional aspects of traditional devrai.

The site selected for the project is located in Aurangabad city, which holds highest rate of communal clashes and riots and the project is based on the contextual needs of the surrounding localities. This project aims –

1. To resolve the community disputes from the city, mainly religious riots faced by the city.
2. To conserve the native biodiversity in urban context.

**DEVRAI AS A SOCIAL INSTITUTION
BUILDING UNIT NO. 1 AND NO. 4**

GROUND FLOOR PLAN

FIRST FLOOR PLAN

BASEMENT FLOOR PLAN

SECTIONAL ELEVATION C-C'

SECTION AT A-A'

SECTION AT B-B'

- A. ROAD 15 M. WIDE
- B. COVERED PATHWAY 3M. WIDE
- C. COMMERCIAL SHOPS
- D. BREAKOUT SPACES
- E. STREET FURNITURE
- F. TOILETS
- G. RAMP
- H. CYCLE PARKING
- I. TRANSITIONAL SPACE
- J. FOOD COURT
- K. LITERATURE STUDIOS
- L. LIBRARY

VEWS

BUILDING UNIT NO. 2 AND NO. 5

GROUND FLOOR PLAN

FIRST FLOOR PLAN

BASEMENT FLOOR PLAN

- A. ROAD 15 M. WIDE
- B. COVERED PATHWAY 3M. WIDE
- C. COMMERCIAL SHOPS
- D. BREAKOUT SPACES
- E. STREET FURNITURE
- F. TOILETS
- G. RAMP
- H. CYCLE PARKING
- I. TRANSITIONAL SPACE
- J. FOOD COURT
- K. LITERATURE STUDIOS
- L. LIBRARY
- M. MUSIC STUDIO
- N. THEATER TRAINING STUDIO

SECTION AT A-A'

SECTION AT B-B'

FOOT BRIDGES & WATCH TOWERS TO EXPERIENCE DEVRAI -

MASTER PLAN

PLAN FOOT BRIDGE AT 1.30M. LVL. AND OBSERVATORY

PLAN FOOT BRIDGE AT 12.00M. LVL. AND OBSERVATORY

National Cricket Academy & BCCI Headquarter



Simran Mulani
F.Y.B.Arch

The Project Is a National Project Which Aims at Becoming One of The Largest National Cricket Academy and New Headquarter Of BCCI. That Involves in Integrating Concepts and technologies to increase the world class facilities for the delegates for the training and a stage to showcase their talents

The main objective of the design is to establish a multi facilitated design environment that will strive to achieve the circulation and safety of the large masses without any hindrance. The project will cater to the necessities of the National and the International sports meet by providing world class facilities also it will add up ancillary facilities that will increase the revenue of the promoters and assist in generating the finance for the maintenance of the stadium.

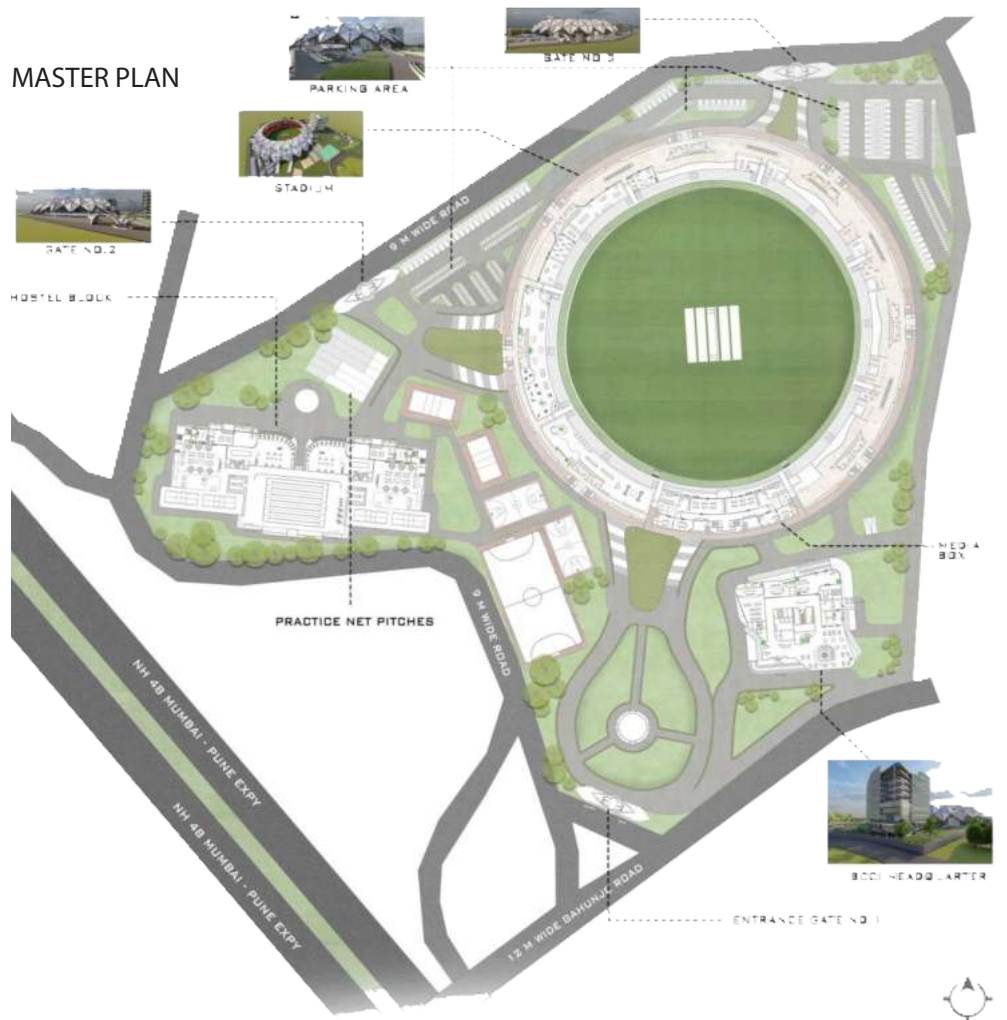
The national cricket academy and BCCI headquarters will provide a world class definition of the sport to the nation and globe

National Cricket Academy will create room for both male and female delegates and sport lovers To create a stadium in PUNE that will have world class standards and associated facilities an urban platform will be created which can house various native cultural festivities Gallery space Pavilion building. VIP lounges, Restaurant, Media stands, Stadium administrations. Services, Storage, Toilets spaces, Hostel for boys and girls, Indoor academy. Multilevel parking.

I opted the site near the Gahunje Stadium of Pune, Which is 9.3Km from Pune stop and easily accessible , 12M and 9M wide roads were provided along the site which joins the 32M wide main Mumbai- Pune Express highway. So the Proposed plot is well connected through major roads. Also in Design solution the stadium is divide into three parts vertically such as Stands , Podiums and Origami roof . Origami roof is a polytetrafluoroethylene light weight material which is easy to install and fire resistance.



MASTER PLAN



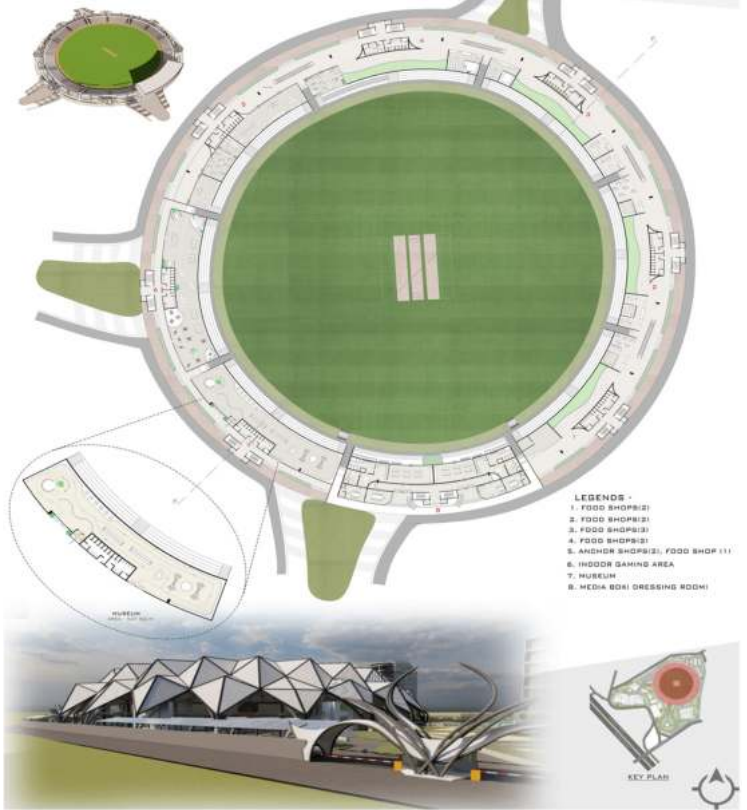


SECTION

MASTER PLAN

LOWER TIER PLAN

STADIUM LOWER TIER IS DIVIDED INTO EIGHT STANDS INCLUDING THE ADMIN/MEDIA CENTER WITH CRICKET FIELD AT THE CENTER FACING NORTH-SOUTH DIRECTION AND LOWER TIER ALSO CONTAINS SPORTS / COMMERCIAL SHOPS AT EXTERIOR OF STADIUM WHICH SUPPORTS FINANCIALLY FOR THE MAINTANANCE OF THE STADIUM WHILE MATCHES ARE NOT HAPPENING.

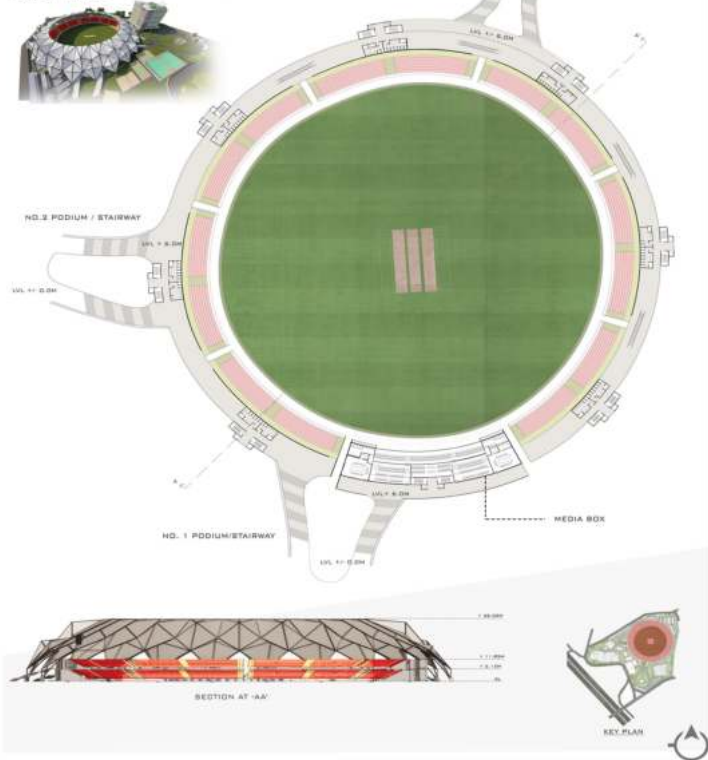


- LEGEND -
1. FOOD SHOPS(2)
 2. FOOD SHOPS(2)
 3. FOOD SHOPS(2)
 4. FOOD SHOPS(2)
 5. ANDHAR SHOPS(2), FOOD SHOP (1)
 6. INDOOR GAMING AREA
 7. MUSEUM
 8. MEDIA BOX(DRESSING ROOM)

UPPER TIER PLAN

STADIUM LOWER TIER:

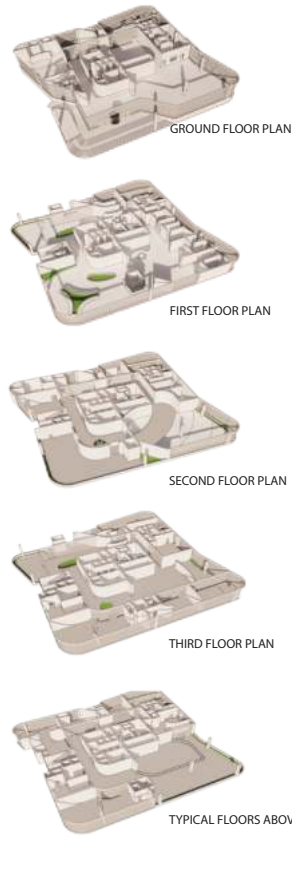
THIS STADIUM HAS PODIUMS / STAIRWAY AT A LEVEL OF 6M TO AVOID THE CROWD BETWEEN LOWER TIER. SPECTATORS AND UPPER TIER SPECTATORS AND THROUGH THIS PODIUM SPECTATORS CAN DIRECTLY REACH THE CONCOURSE LEVEL AT 6M FROM THERE THEY CAN REACH THE UPPER TIER THROUGH THE T COLUMN STAIRCASE



NO. 1 PODIUM/STAIRWAY

NO. 3 PODIUM / STAIRWAY

BCCI HEADQUARTER



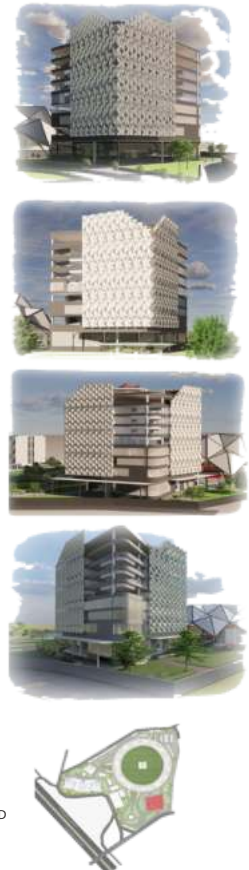
GROUND FLOOR PLAN

FIRST FLOOR PLAN

SECOND FLOOR PLAN

THIRD FLOOR PLAN

TYPICAL FLOORS ABOVE THIRD



Cultural Convention Center



Vaishnavi Jagdale
F.I.Y.B.Arch

INTRODUCTION

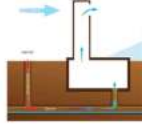
- Due to modernism in today's world traditional aspect is being missing, to preserve such traditional aspect we need to balance both traditional as well as modernism respectively.
- Developing an iconic public place for culture and tourism which celebrates and Promotes art, culture and tradition and portrays them to the international visitors.

AIM

- To provide a platform to the various sectors a great opportunity through this socio-cultural centre.
- To improve the regularity to attract large international and national conventions.
- To create the blend of contemporary modern and traditional art forms and give sense to them.

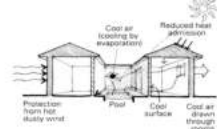
PLANNING STRATEGIES

- Underground wall reduces the heat transmission to the roof of the gallery and thus, help in keeping the inside cool.



Daylight & courtyard effect

- To provide lighting scenarios with a connection between indoor spaces and the outdoors through the introduction of daylight and views into the mysteriously accidental areas of the building.



Solar panels on green roof

- The green roof element can have a cooling effect, especially in summer.
- Year round, green roofs can help to keep ambient temperature around the panels at or near 25C.
- This is the best temperature for solar panels to work most efficiently.
- A green roof make the installation of A-frame panels easier.



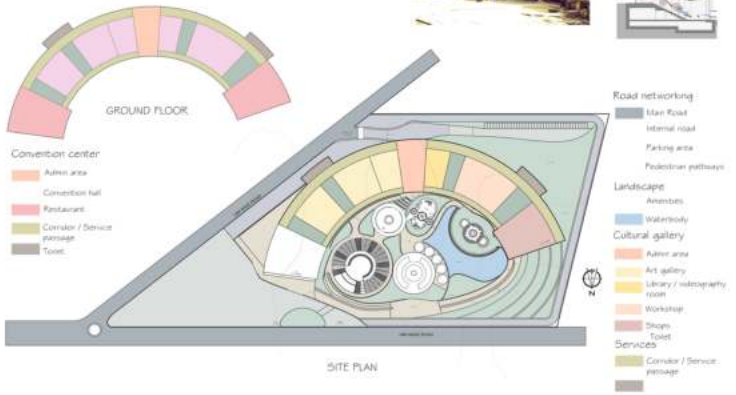
Material reuse

- To reuse building materials and products to reduce demand for virgin materials and reduce waste, thereby ensuring more associated with the extraction and processing of virgin resources.
- Concrete and rubble are often recycled into aggregate and concrete products. Wood can be recycled into engineered wood products like furniture, floors like steel, copper, and brass are also valuable resources to recycle.



CULTURE BRIDGING THE REGION AND HISTORY

Nashik is famous for caves which is located on hill at the outskirts of Nashik city. In ancient times green roofs consist of cave-like structures covered with earth and plants covering.



SITE PLAN



The Project Is Cultural convention center Which aims at reflecting cultural heritage of site location which is nashik.. as nashik is well known for their ancient caves...Creating a structure that is functionally and structurally similar to caves with a contemporary architectural vision, crafting a space that not only honors the past but also embraces the future. can offer various benefits, including natural insulation, thermal mass, and inherent stability.

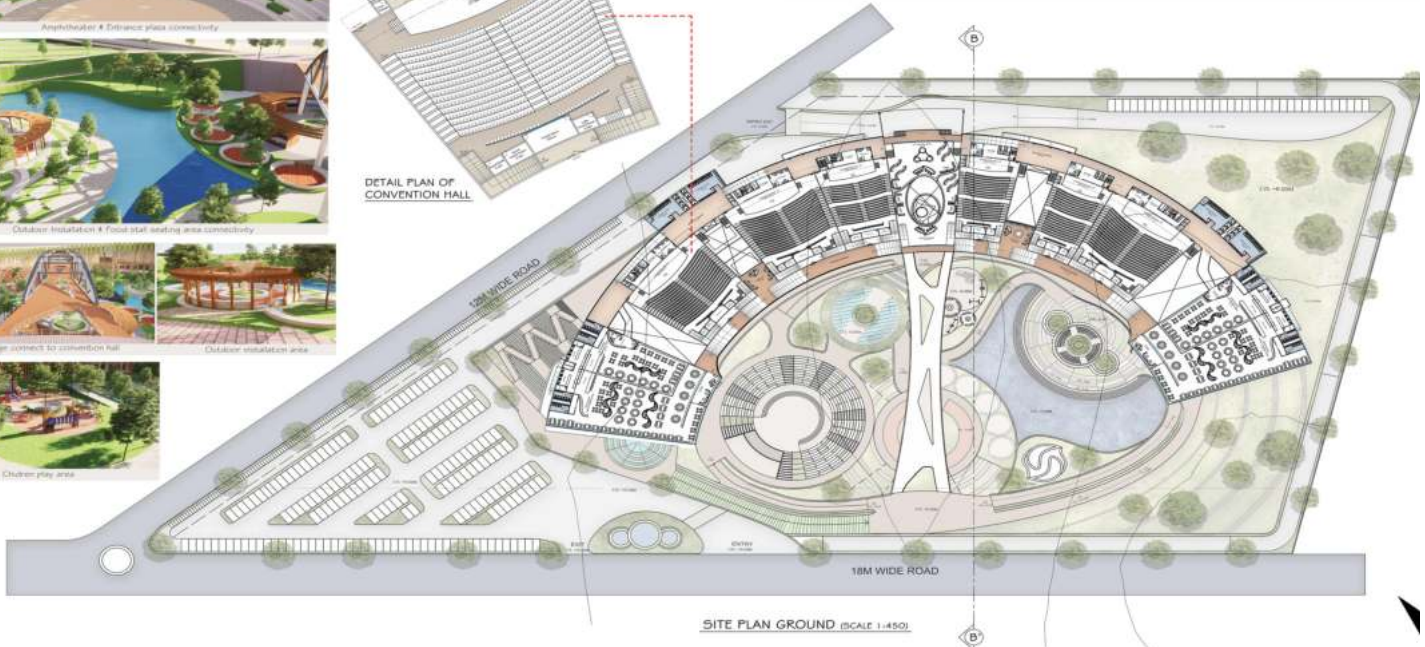
As the design solution appeals towards green roofs that seamlessly merges with the surrounding terrain. This living roof not only mirrors the natural beauty of the caves but also serves as a public space for communal gatherings and leisure activities. By creating a space with a water body where people can come together and celebrate their festivals, not only reflecting the cultural significance of Nashik but also providing a contemporary interpretation of how communities gather around the Ganga River in Nashik to preserve and celebrate their culture. Making it a place

where traditions are honored and community bonds are strengthened, much like the gatherings along the Ganga River in Nashik. Designing a circular-shaped building can further enhance concept by minimizing the surface area exposed to direct sunlight from the southwest direction. Due to modernism In today's world traditional aspect is being missing, to preserve such traditional aspect we need to balance both traditional as well as modernism respectively Developing an iconic public place for culture and tourism which celebrates and Promotes art, culture and tradition and portrays them to the international visitors

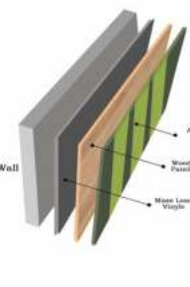
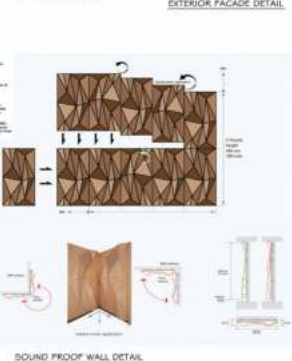
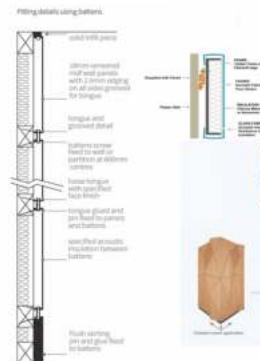
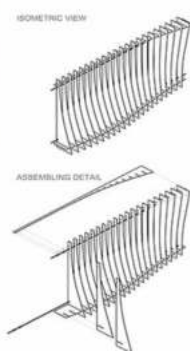
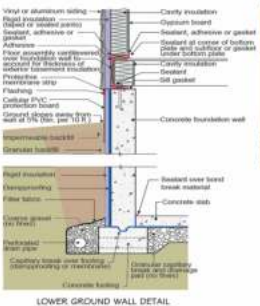
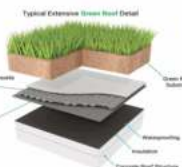
SITE PLAN GROUND



GENERAL FLOOR REQUIREMENT				SPECIAL FLOOR REQUIREMENT			
FLOOR NO.	AREA	NO. OF SEATS	SEATING AREA	FLOOR NO.	AREA	NO. OF SEATS	SEATING AREA
1	Amphitheater	1000	1000	1	Amphitheater	1000	1000
2	Entrance Plaza	500	500	2	Entrance Plaza	500	500
3	Outdoor Installation	200	200	3	Outdoor Installation	200	200
4	Food Stall Seating Area	150	150	4	Food Stall Seating Area	150	150
5	Children Play Area	100	100	5	Children Play Area	100	100
6	Outdoor Installation Area	100	100	6	Outdoor Installation Area	100	100
7	Bridge	50	50	7	Bridge	50	50
8	Convention Hall	10000	10000	8	Convention Hall	10000	10000



STRUCTURE DETAILS AND LANDSCAPE DETAILS



PHOTOGRAPHY



Title: Voice of colours and crowd
Description: Public spaces photography
by: Sourabh Nikam

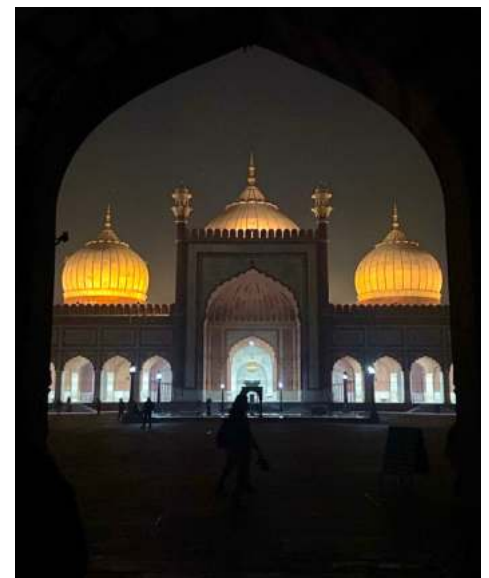


Title: Innocence of Wild
Description: Wildlife photography
by: Ar.Omkar Bhosale

Title: Beyond the window
Description: Architectural Photography
by: Ar.Omkar Bhosale



Title: A monument towards infinity
Description: Architectural Photography
by: Ar.Omkar Bhosale



Title: Towards the light
Description: Architectural Photography
by: Sourabh Nikam

PAINTINGS & ILLUSTRATIONS



Title: Zentangle Art of Humming bird
Pen and Ink
by: Vedika Jitendra Ghorpade



Title: Lord Krishna
Madhubani Art
by: Vedika Jitendra Ghorpade



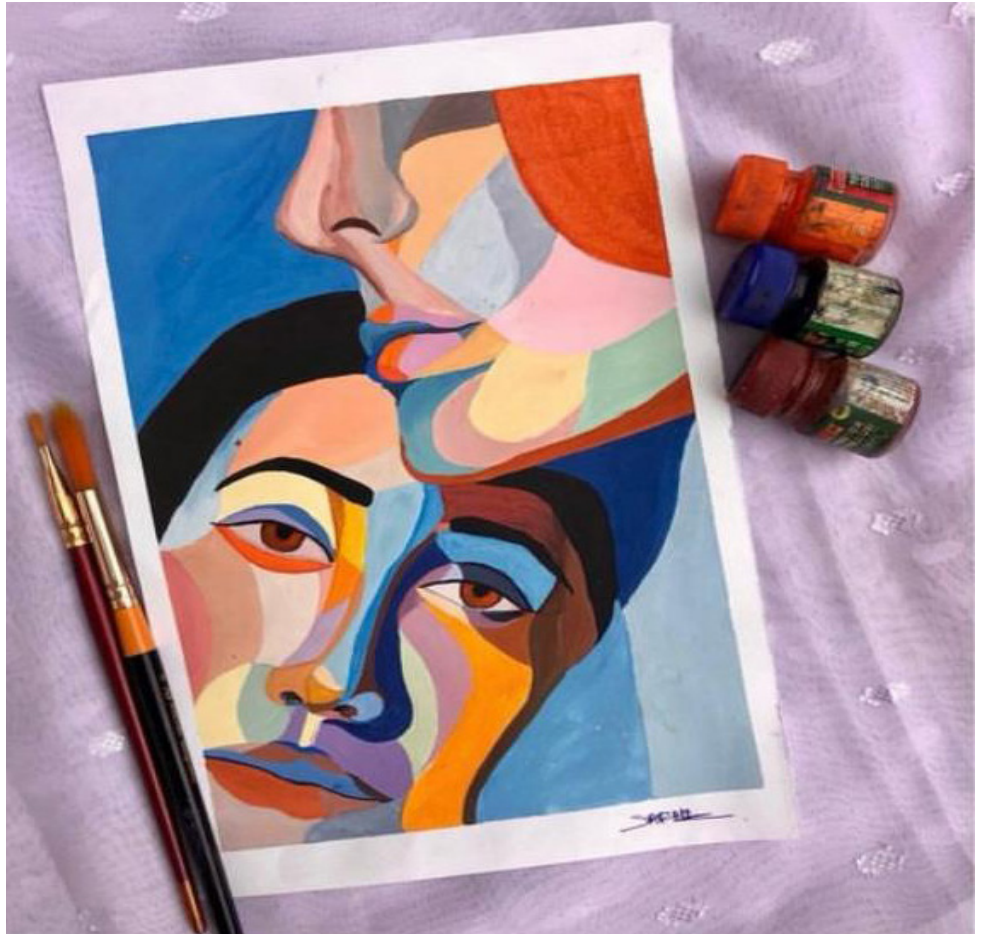
Gond Art
Traditional artwork with poster colours
by: Vedika Jitendra Ghorpade



Heritage Sketching
Pencil Sketching
by : Arati Nevarekar

PAINTINGS & ILLUSTRATIONS

Title: Colour Emotions
Description: Pop art with poster colours
by: Sarah Shaikh



Title: Baneshwar Temple ghat
Description: Pencil Sketching
by: Arati Nevarekar

Title: The Mohostav
Description: Kalamkari with Poster Colours
by: Vedika Jitendra Ghorpade





Title: Koi Fish in Pond
Description: Illustration with Steadlers
by: Sarah Shaikh

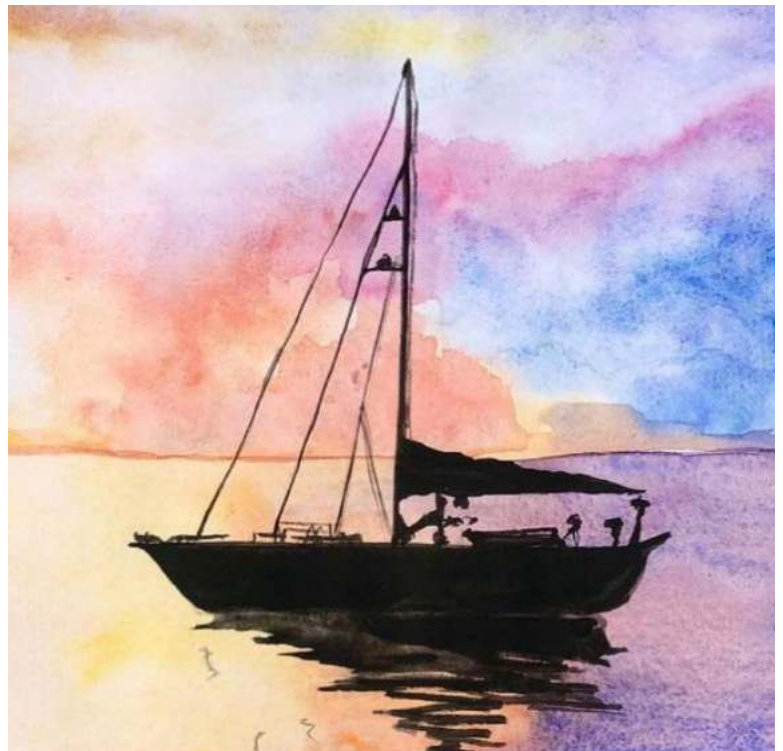


Title: Reflection
Description: Landscape painting with water colours
by: Sarah Shaikh

Title: Meera
Description: Ragini Rajsthani art
by: Vedika Jitendra Ghorpade



Title: Sailing Aviator
Description: Watercolor on handmade canvas
by: Sarah Shaikh



SKETCHES

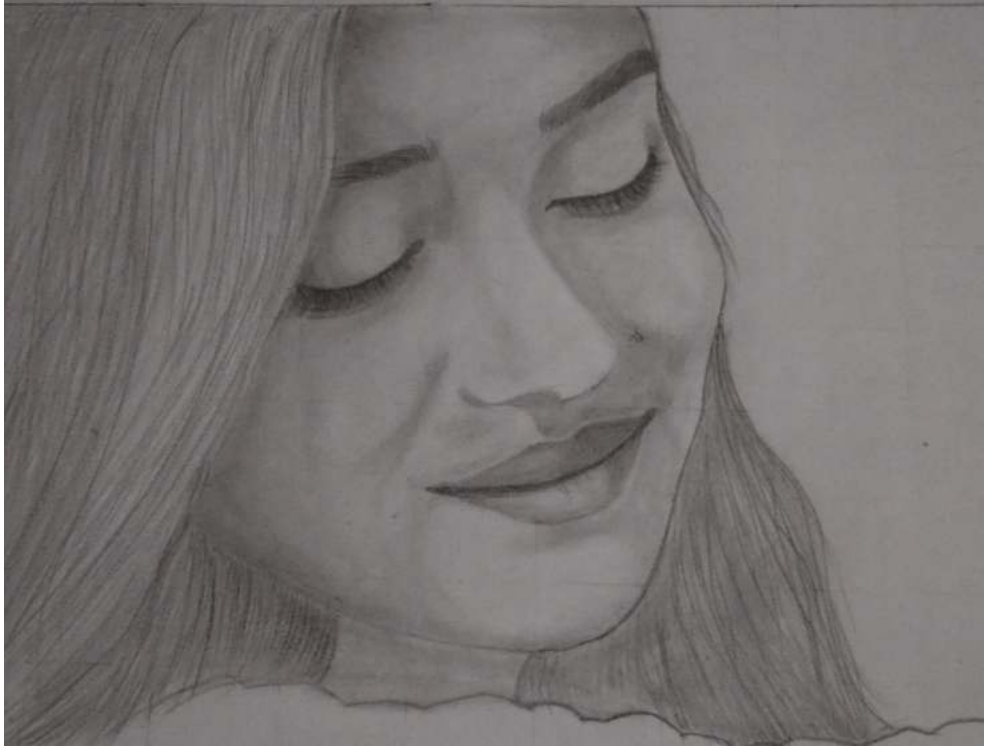


Title : Bahuleshwar Temple Sketch
Description: Live Sketching
by: Arati Nevarekar

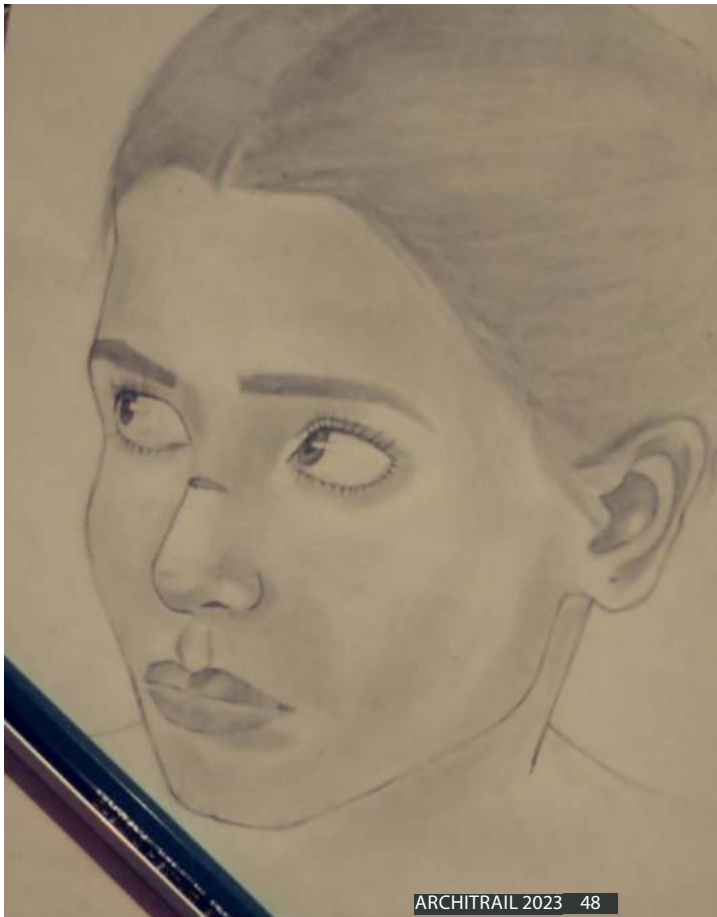
Live Sketching
Rajwada
by: Arati Nevarekar



Indian Wada painting
Live Painting
by: Sarah Shaikh



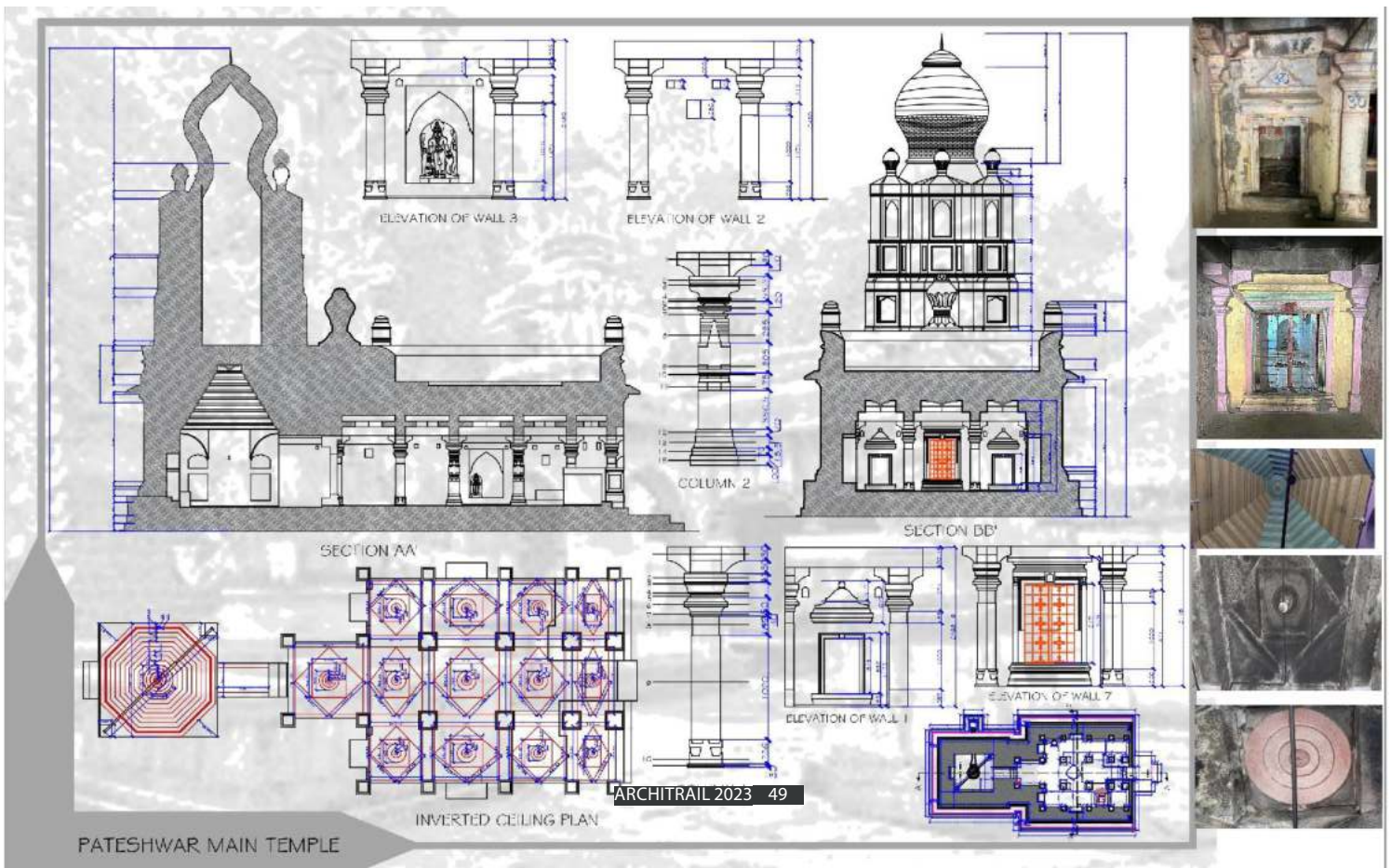
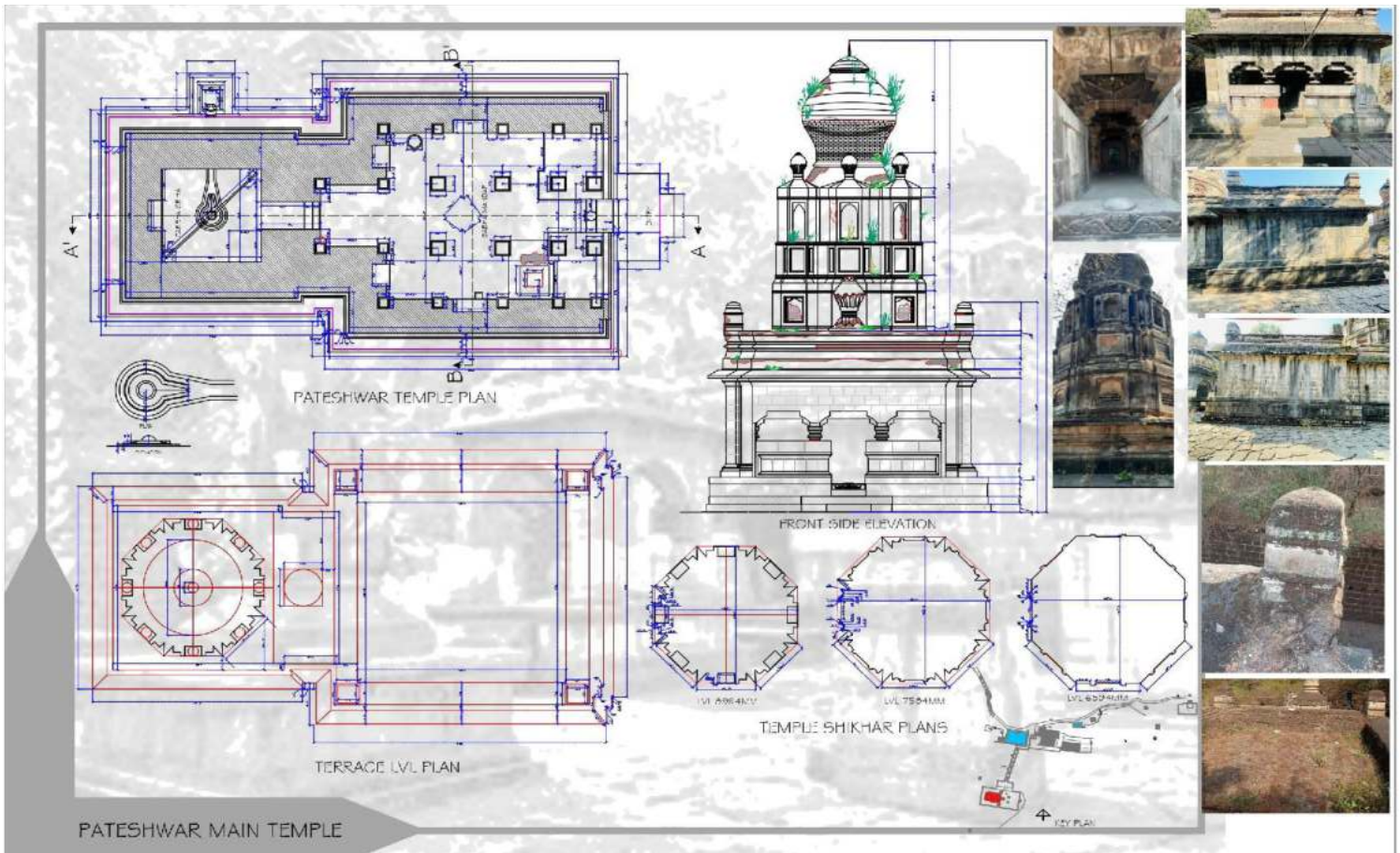
Title: Self Portrait
Description: Pencil Sketching
by: Shravani Bhosale

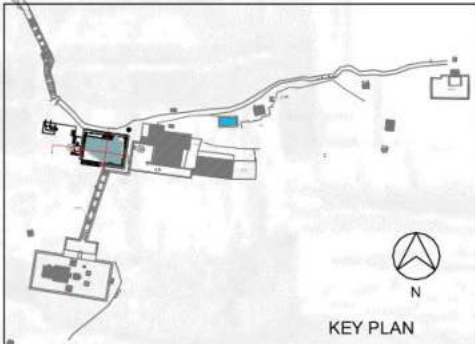
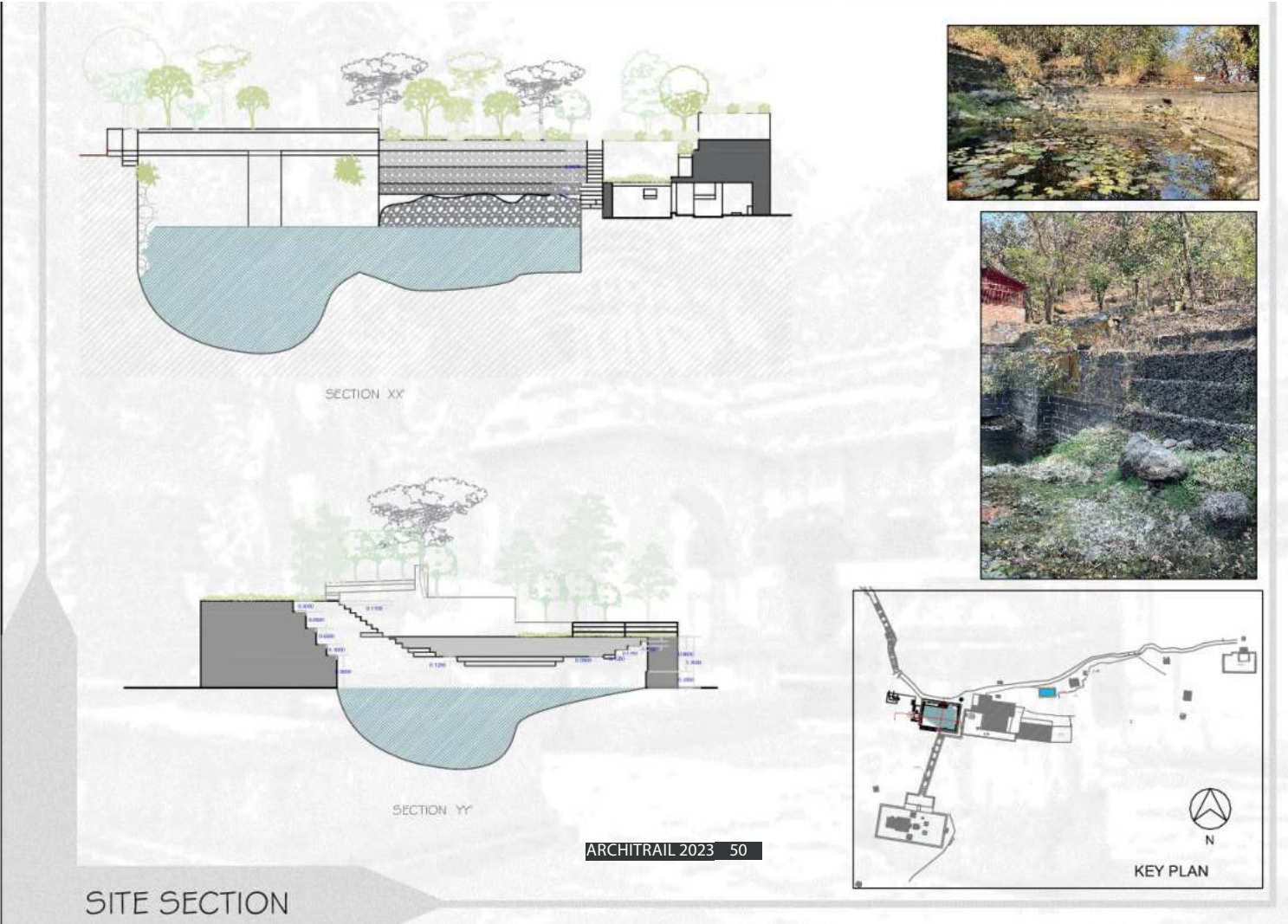
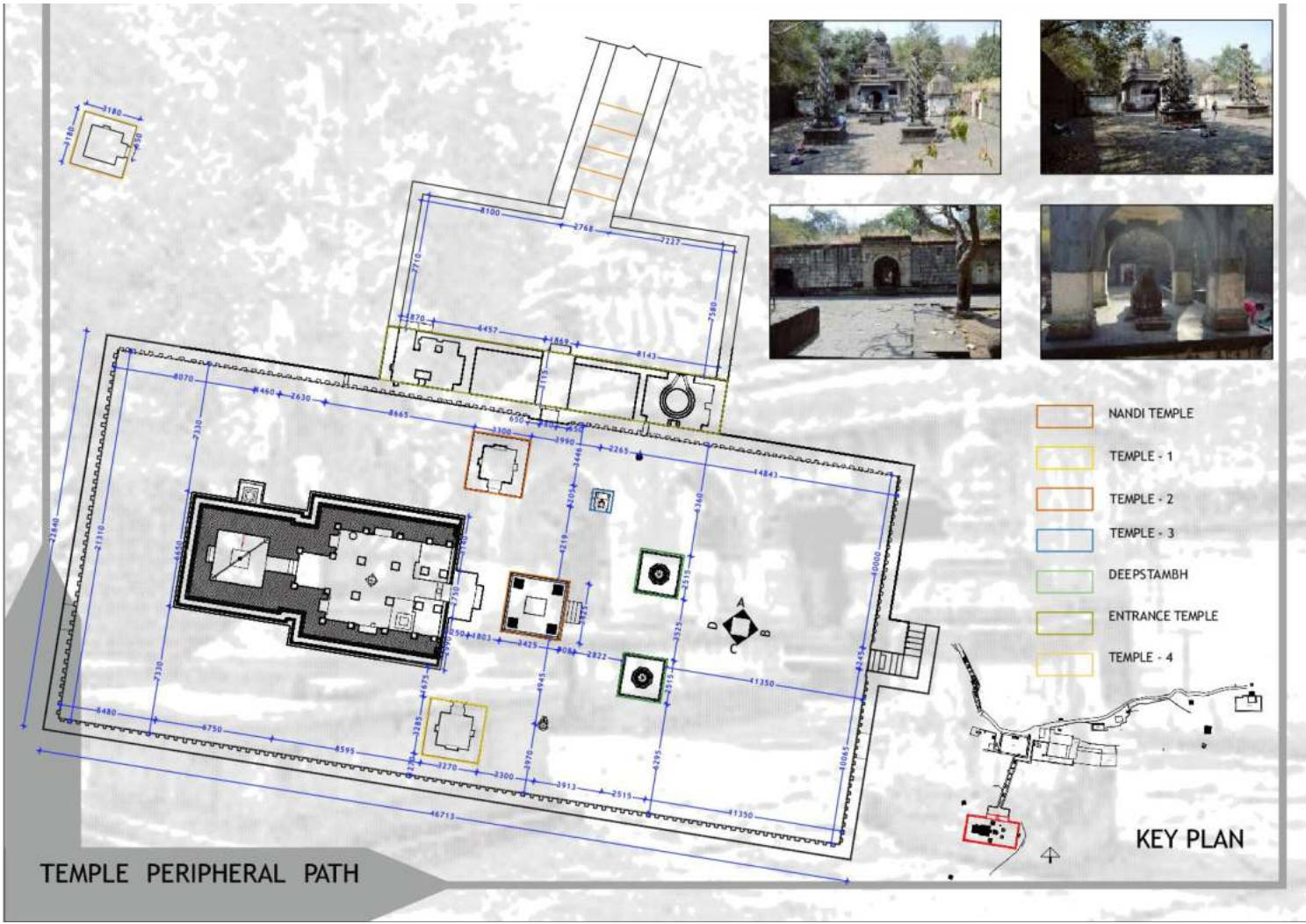


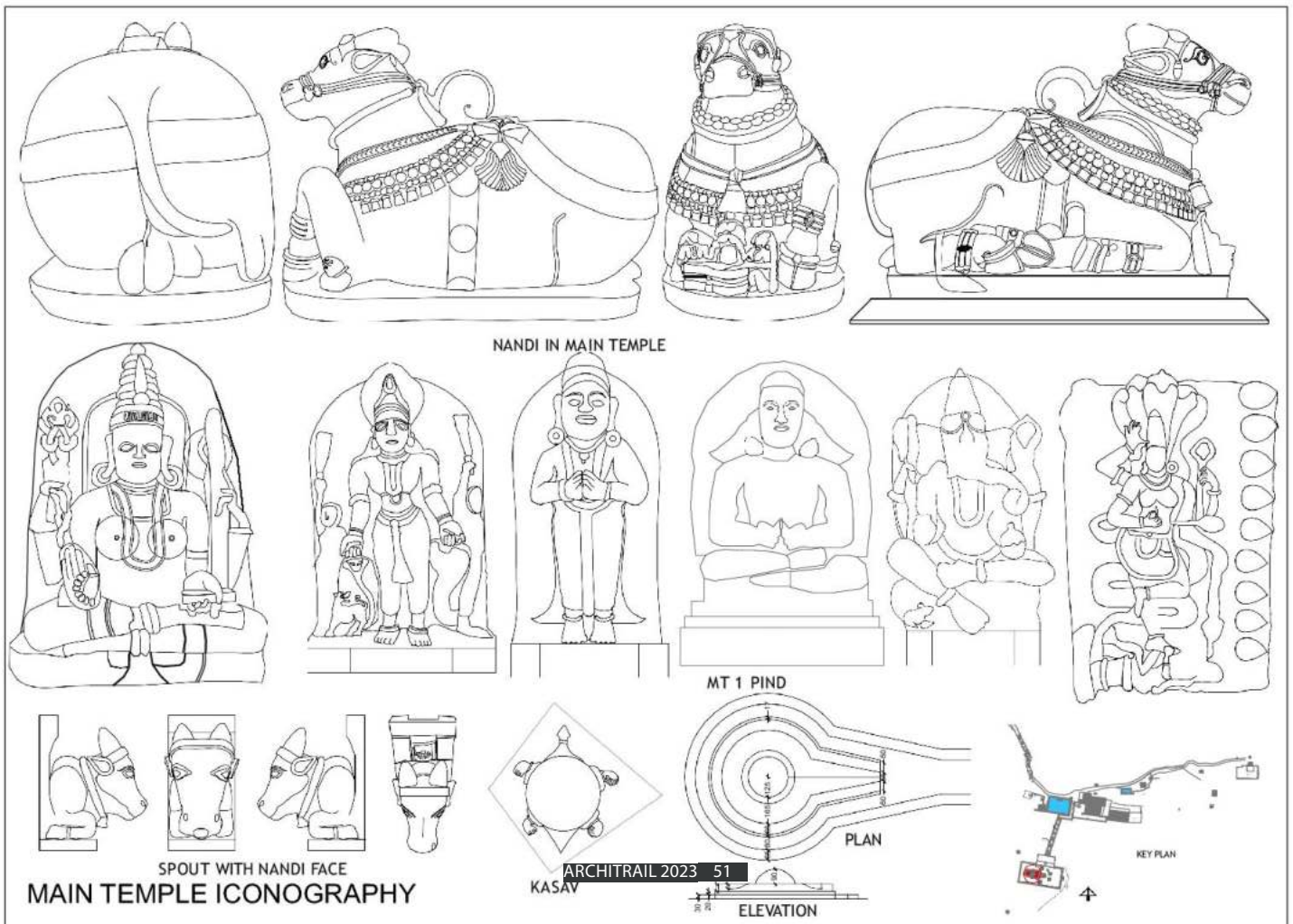
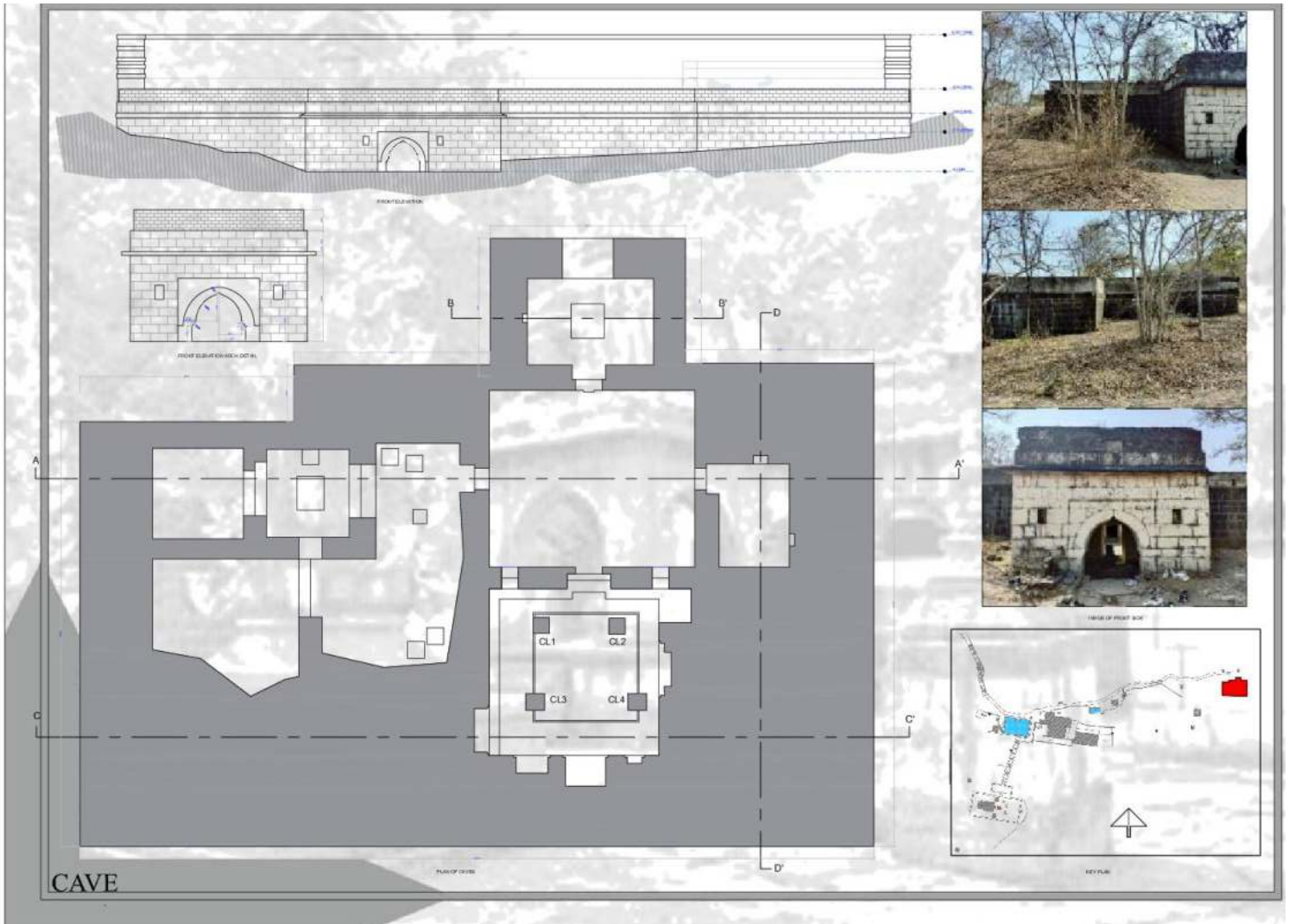
Title: Portrait
Description : Pencil Sketching
by: Shravani Bhosale

SKETCHES

Pateshwar Temple Complex Documentation







A Comprehensive Study on potential for Developing Heritage and Pilgrimage Tourism in Satara :a Case of Vasota Fort



Ms. Anuja Shinde
F.Y. B.Arch



Ar. Rakhi Bengampure

ABSTRACT:

This paper endeavors to assess the tourism potential of Vasota, contributing to the broader tourism development in Satara, Maharashtra. The primary focus is on identifying existing challenges and proposing effective measures for the management of this tourist spot. Satara, a district of historical significance, is distinguished by the presence of two popular hill stations and gained additional recognition with the UNESCO designation of Kaas as a world heritage site in December 2012. The main objective is to evaluate the issues related to tourist infrastructure in the district and bridge the perceptual gap between its current status and inherent significance. Given the influx of tourists during summer and winter vacations, coupled with the presence of other notable destinations in Satara, a comprehensive understanding of tourist perceptions is deemed essential. This understanding is critical for facilitating impactful tourism development and positioning Satara as a diverse and appealing tourist destination. The paper presents a meticulously designed proposal that aligns with the actual requirements of the location, with the aim of attracting a larger number of tourists and establishing Satara as a multifaceted emerging tourist hotspot in Maharashtra, India. Key words: Tourism development, Pilgrim and heritage tourism

INTRODUCTION: The tourism sector, acknowledged for its continuous expansion and latent growth potential, holds significant economic importance at both national and international levels. In this context, Vasota emerges as a pivotal location with diverse tourist potentials, encompassing adventure activities, natural landscapes, water boating, paragliding, and more. Adventure tourism, marked by outdoor leisure pursuits in unconventional and remote settings, stands out as particularly noteworthy. Satara, a pivotal district in Maharashtra, distinguishes itself with a high potential for adventure tourism, notably in its historic forts like Vasota, which captivate adventure enthusiasts. The district boasts scenic beauty, bird watching, rapids, waterfalls, and the backwaters of the Koyana dam, providing a spectrum of enriching experiences.

Situated in the western Indian state of Maharashtra, Satara spans nearly 10,484 sq. km and carries a vibrant historical legacy, having served as the capital of the Maratha Empire. Beyond its historical significance, Satara has become a sought-after destination for regional and Bollywood film shoots. While renowned hill stations like Mahabaleshwar and Panchgani attract tourists, the district harbors a variety of untapped tourism products, signaling a need for comprehensive tourism development. This prompts a critical examination of the existing tourist infrastructure in Satara, aiming to shed light on its potential and the gaps that hinder its growth. This study advocates harnessing the abundant natural resources conferred upon Satara to elevate it as a premier tourist destination, fostering growth and development.

The tourism industry, recognized as the world's largest sector by both the World Tourism Organization (WTO) and the World Travel Tourism Council (WTTC), has seen substantial growth potential, with India emerging as a favored tourist destination in South East Asia (<http://www.jonesbahamas.com>). Spanning an area of approximately 10,484 square kilometers and traversed by the rivers Krishna and Koyana, Satara is situated in the western Indian state of Maharashtra. Notable towns in the district include Wai, Panchagani, Mahabaleshwar, Karad, Koregaon, and Koyananagar. Satara is gaining recognition for nature, leisure, and pilgrimage tourism, besides being a popular filming location for regional and Bollywood productions.

While Mahabaleshwar and Panchgani are well-known hill stations, several other attractions in Satara often go unnoticed by tourists. These include ancient caves in Agashivnagar, Nandgiri, and Pateshwar, forts like Pratapgad and Ajinkyatara, wildlife in Koyananagar and Vasota, temples and pilgrimage centers such as Chaphal, Pali, Sajjangad, and Shikharshingnapur, and museums like Aundh and Satara's Shivaji Sangrahalay. Additionally, the district features dams like Koyana, Kanehar, Dhom, and Veer, bird sanctuaries at Mayani, waterfalls at Ozarde, Thoseghar, Lingmala, and lakes such as Kaas and Verma. Health resorts like Prakruti, windmills at Chalkewadi, hydroelectric power plants at Koyana, vast plateaus at Panchagani and Kas, and more contribute to the diverse offerings of Satara.

Recognized as one of Maharashtra's significant districts with high potential for adventure tourism, Satara is home to forts nestled in the Western Ghats' high ridges, complemented by the region's abundant wildlife. Sites like the Kaas Plateau, spanning 1142 hectares, and the Koyana Wildlife Sanctuary, covering 42355 hectares, further bolster natural tourism development in Satara. The district encompasses a wide array of attractions, excluding a coastal region, making it a comprehensive destination that includes historical caves, forts, wildlife, temples, museums, dams, bird sanctuaries, waterfalls, lakes, health resorts, and more. This inclusive assortment positions Satara as a prominent tourist hub, showcasing not only its two well-known hill stations but also a plethora of hidden gems waiting to be explored.

Social Aspect of Devrai's in maharashtra



Mr. Pranav Kokare
F.I.Y. B.Arch



Ar. Shaunak Kadam

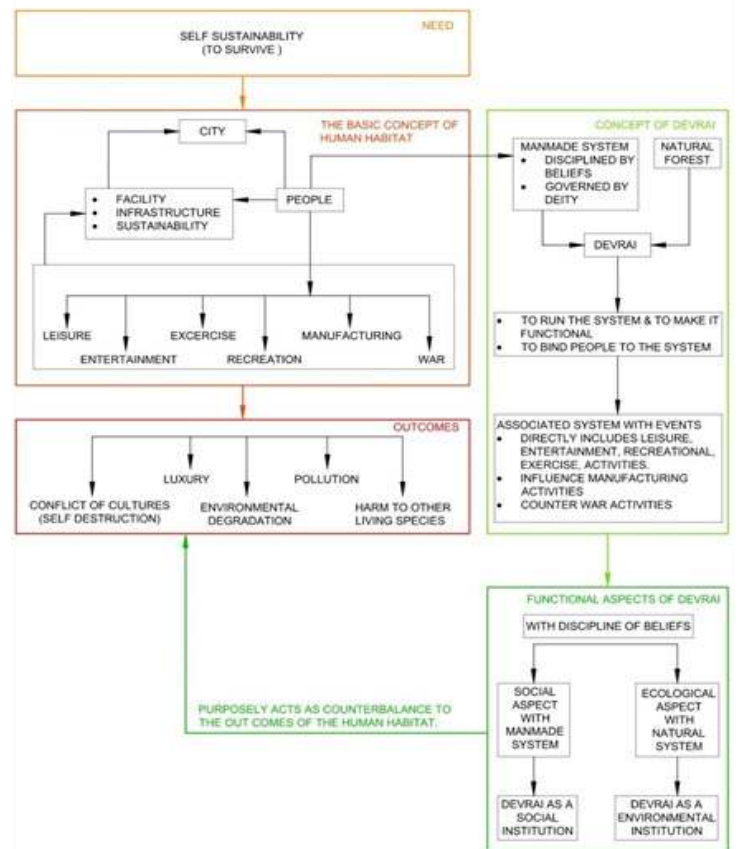
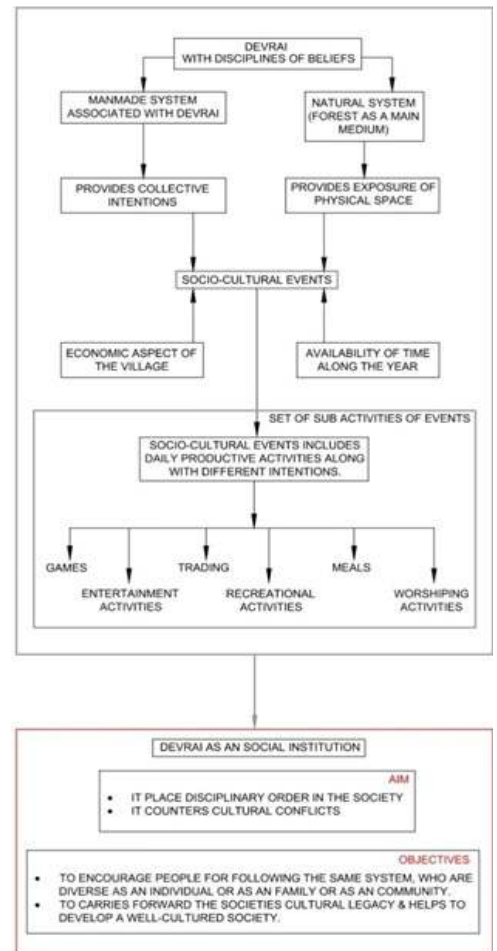
ABSTRACT:

Devrai is a tradition in our societal culture that serves nature & society. It is the forest that functions as a social institution. Organizing & hosting Societal & cultural events by providing collective intensions to the society, is the main medium for functioning of devrai as a social institution. Its function as a social institution makes the devrai different from a vanrai (just a natural forest). Devrai's functional aspect is based on a manmade system, which is disciplined by beliefs and governed by a Deity. The concept of Devrai ensures the protection of native biodiversity & represents the symbiotic living of human and nature. Devrai functions to fulfill its own Aim & objectives setup by that manmade system. This manmade system is based on the cultural context of the region in which the Devrai is located. So the types of events also vary with the variation in context. The disciplined belief system ensured the self-sustainability of devrai throughout the history and also kept regularity in organizing the events. The events that get organized in devrai are the set of sub-activities that includes Games, trading, recreational activities, entertainment activities, meals & worshipping activities. These events hold the involvement of peoples there by interacting with each other, which develops a sense of community in them. This paper analyzes the devrai's of Maharashtra in present day scenario where villages & cities are growing rapidly. Devrai's are coming in core and being harmed by modern living culture of the society. This paper is first step to understand traditional approach for establishing the human-nature relationship and to promote the symbiotic living of their coexistence 1.

Introduction

INTRODUCTION: Introduction about the concept of devrai –

In Maharashtra Devrai is commonly known as "Devrahati". It is a combination of two words dev & rahati that means god & tradition. Devrai is a physical space; culturally it's a Tradition, materially it's a forest and architecturally it functions as a social institution & Environmental Institution. Devrai or Devrahati is a space made-up with the physical elements of nature combined spiritual beliefs. These beliefs are also part of myths that protected Devrai through the history. Every devrai has its own story/ folktales about its origin that mainly focus on the origin of the deity. Our ancestors identifies and adapted a patch primary forest and associated a manmade system to it which is been governed by a deity. The deities of devrai can be male deities or female deities, most of the devrai's are dedicated to local female deities that origins from nature the deities are named as like kalakai mata, mengai mata, jugai devi, vaghajai devi. Many devrai's are dedicated to male deities also, in which most of the Devrai's are dedicated to the avatars of lord Shiva. The rituals that get performed in the devrai are majorly depending on the type of deity & also on the individual as deity. eg. Female deities mainly get served the animal scarifies but male deities mostly don't have ritual like that.



Belief system of Devrai & Its Disciplines –

The concept of devrai has been sustained through history, even the perspective towards the religious & cultural traditions have been changed with time. The reason behind the sustainability of the devrai is that the devrai has its own 'self sustaining belief system'. Conceptually it's a set belief that states if we use devrai (the forest) as resources or if we hunt the animals in devrai then the deity will curse on individual or the village. In perspective of people have been changed towards these traditions, with that the belief system also changed. The emotion of fear has been shifted to the emotion of respect of the deity.

Feasibility Study of Adaptation and Reuse of Landfill Site



Ms. Neha Topale
Fi.Y. B.Arch



Ar. Swarali Sagare

ABSTRACT:

Landfills are one of the common method of solid waste disposal. With the increase number of waste dumped, it becomes difficult and inevitable to manage the landfill site. Even if many solutions such as bio-mining , material recovery facility,waste to energy plants,the three R's for waste management have come into implication, landfill continue to become a major problems in urban cities for many years. This causes the landfill to become a hazard to the ecosystem.

The life span of the landfill is 30 years after its closure period to maintain the site but it exceeds its time limit as waste is dumped on site. Overuse of landfill leads to pollution and it becomes a eyesore in the cities. The issue is more significant as many landfill sites in nearby urban areas where a piece of land is scarce & environmental hazards are serious problems in the ecosystem.

The research analyzes the feasibility study of landfill for use of different adaptation for the city to thrive & accommodate the environment concerns. The paper studies the site analysis of Indore landfill site and Ambikapur landfill site. The study proposes the case analysis of Mulund landfill site as this landfill have become the integral part of the city and have come in core after the expansion of the city. Hence adaption of this landfill site is required to improve not only the environment but also the lives of neighborhood societies near the landfill in Mumbai city. The study proposes the transformation of landfill into a beneficial after use for people living in the neighbourhood living spaces which may be come under trend for sustainable development of urban areas. The study offers an approach for integrating, the social, economic and environmental benefits through its adaptive reuse forming a habitable space in the landfill site.

INTRODUCTION

Every Indian city has at least one man made mountain where waste is generated in our homes and businesses end up.About 90% of staggering 150,000 metric ton of urban solid wastes is generated every day called as dump yards,landfill or garbage mountains.Landfills are the common method of waste disposal.A landfill is a carefully designed structure built into or on top of the ground in which trash is separated from the area around it.This isolation is accomplished with the use of bottom liner and daily covering of soil.Types of landfill contain 3 types -

- Municipal solid waste
- Industrial waste landfill
- Hazardous waste landfill

Municipal solid waste landfill contain bioreactor landfill.Industrial waste landfill contain construction & demolition debris landfill and coal Combustion Residual landfill.Hazardous waste landfill contain poly chlorinated biphenyl landfill

Adaptive reuse and redevelopment at Ajinkyatara fort precinct



Mr. Swapnil Dharmadhikari
Fi.Y. B.Arch



Ar. Snehal Shedge

ABSTRACT:

India is a country with history that reflects thousands of year and thereby it has natural and manmade Architectural heritage. The Natural heritage is determined by the gained historical importance with time by the nature, scale and design. Manmade heritage such as Forts, Palaces, Haveli's, and Temples etc.

Preserving heritage buildings is very essential as they are socio-cultural indicators of the past which gets lost over the time. Heritage gives a city its identity and uniqueness that prevents all the towns to be the same. During their life stages, historic buildings may lose entire life span of their structure and become deserted. Thereby adapting the structure to some other use which is applicable on today's context thereby making it more viable for sustenance economically. Heritage precincts amplifies this on an urban level. Further a new rich and co-existed flourishing between old culture and new culture can be witnessed.

This paper explores the adaptive reuse of one of such precincts "Ajinkyatara Fort" which holds a great historical value. Ajinkyatara fort is a plateau where "Shahu maharaj" used to live but due to expansion of kingdom they migrated from the fort and the fort remained abandoned. After many years the cultural and heritage value of the fort remained unrecognized. So the study approaches towards the adaptation of Ajinkyatara Fort Precincts.

INTRODUCTION

In today's world, more and more attention is being paid to the adaptive reuse of Heritage building. There are many buildings, which have lost their main function and which could be adapted to accommodate new functions. Adaptation has its roots in a combination of 'ad' (to) and 'aptare' (fit) and means action or the process of fitting. Although implementation new uses in old structure is not new. In its classic definition, it reflects to change in use.

India is a country with a history that goes back several thousand years. All these years, our ancestors have given birth to some of the most significant architectural marvels of the world. However, the historical remains are broadly categorized into two. The first ones are the monuments that gained historical significance over time, and by the nature of their design, space, scale, and original use attracts thousands of tourists. The second ones are the unlisted historic buildings like palaces and Havelis, which, though our historic and cultural properties, cannot draw people to them. Hence, it is urgent to revitalize these heritage buildings by reusing them for proper modern-day function. Thus, our future generations may benefit and be aware of our heritage and where we have come.

As permanent and apparent records of an era that has vanished, India's places have role in discovering the country's past. There are many forts, places, mosques, temples and places of historical importance. These places can be converted into heritage hotels to keep tourist close to the heritage.

Heritage conservation deals with actions or processes that are aimed at safeguarding the character-defining elements of a cultural resource so as to retain its heritage value and extend its physical life.

Heritage conservation doesn't mean freezing a building in time, creating a museum or tying the hands of property owners so they can't do anything with their properties. Instead, it seeks to maintain and thereby increase the value of buildings by keeping their original built form and architectural elements, favoring their restoration over replacement or demolition and, when restoration is not possible, respectfully recreating scale, period and character.

Heritage Conservation provides concrete benefits to property owners, businesses, developers and to the community as a whole:

Heritage conservation increases property values – both the restored building and surrounding properties.

Heritage conservation encourages tourism and helps businesses attract customers. Communities can build their town or city's image around retained historical elements. Retaining the historic integrity of a neighbourhood or town attracts people mainly for that ambiance which in turn attracts business. A small town without a heritage main street attracts few people.

Conservation keeps money within the community by requiring fewer materials from outside and more labour-intensive work by local trades.

With the right programs in place, businesses and building owners can take advantage of government programs and incentives to maintain and restore heritage buildings although in NSW, there are few available incentives (sadly).

Conservation reduces construction and demolition waste and uses less than half the energy of new construction. It is therefore, sustainable.

Heritage conservation results in investment in our communities. The investment rewards us today and leaves an invaluable resource for future generations. Heritage conservation improves urban environments and gives them their distinctive character.

Exploring the Prospects and Infrastructure Advancements for Religious Tourism Circuits in Maharashtra



Ms. Sayali Thorat
Fi.Y. B.Arch



Ar. Rakhi Bengampure

ABSTRACT:

Tourism holds a crucial role in contemporary socio-economic development, wielding substantial influence across various dimensions. Acknowledged for its diverse impact on economic, social, political, environmental, cultural, and psychological facets, tourism stands as a pivotal driver for overall progress. In the past decade, India has actively worked towards enhancing its tourism sector. This study aims to identify specific locations and establish tourist circuits that attract visitors. Utilizing the TOPSIS tool, priority was assigned to particular circuits, leading to the selection of a circuit that prompted the identification of essential infrastructure development projects geared towards enhancing tourist interest in the designated area.

Tourism, commonly described as the “activity of visiting places for pleasure,” involves individuals moving beyond their usual place of residence, encompassing journeys within cities, states, countries, or across international borders. Most individuals engage in tourism activities at some point in their lives, be it visiting relatives in a nearby city, exploring local landmarks, or embarking on international vacations. Throughout these experiences, various service providers, such as travel agents, guides, transporters, and souvenir sellers, actively contribute to the overall tourism ecosystem.

Introduction:

Circuit: A Tourist Circuit is defined as a route comprising at least three major tourist destinations that are distinct and separate. Circuits should have well-defined entry and exit points, motivating tourists to visit most of the identified places within the circuit.

Tourism in Maharashtra:

Situated along the western coast of India, Maharashtra is characterized by densely forested hills and valleys containing diverse flora and fauna, ancient caves, and a rich cultural heritage. Known as the Bollywood hub, Maharashtra stands as a major tourist destination, hosting 5,078,514 foreign and 119,191,539 domestic tourists in 2017, according to the Ministry of Tourism, Government of India. Providing a range of accommodations, including heritage hotels, luxury resorts, budget options, and homestays, the state is renowned for its tourist-friendly atmosphere.



My perspective



Ar. Arti Kokare

In today's world construction industry is a very huge field in which Architect plays an important role.

We have the power to create the visionary things and turn them into reality.

An Architect is also known as "The Creator".

An Architecture student can make a good career in any creative area. But it is important to identify which skill represents You, that will show your inner strength, which is irreplaceable.

Life as an Architect was way beyond my thinking, i always thought it was all about turning paper drawings into models.. thats it ? But after several years of hard work i realized "Everything isn't easy, it needs Patience". I learned to aspire communication skills, project management, time management & strong leadership. I completed my B.Arch degree in 2021 & i spent my initial year for exploring and honing my skills. I had a fear of "what if I fail? But I choose to FLY ...

Currently in 2024 im an proud Entrepreneur having my own office at Panvel (Navi mumbai) named as "Aviothic Design Studio" with which I try to turn your dream into reality with support of 8 team members. We are currently operating our 3 - 4 projects & few pipeline projects will be completed in 2025 & 2026.

In this journey I'm always grateful towards my parents, team members & faculty who supported & and guided me all the way!

Thank you everyone who Believed & trusted in me.

With a lot of hard work and patience I'm on my way to create my own legacy...



La Arvisa



Ar. Siddharth Tarale



This 375 sq.m. modern neo-classic villa is a symphony of elegance and contemporary luxury. The exterior, adorned with arched windows and clean lines, showcases timeless design. Inside, an open floor plan bathes the living spaces in natural light, creating a welcoming atmosphere. The kitchen, seamlessly combines functionality and sophistication. With 5 bedrooms, including a luxurious master suite, the villa is designed for modern family living. Meticulously landscaped outdoors extend the living space, providing a private oasis. Every detail, from premium finishes to carefully curated decor, contributes to the villa's refined and enduring appeal.

The ground + 1 layout of the villas is structu-

red to include spacious living areas and multiple sit outs. The large covered verandah next to the drawing-dining space can be used as an additional lounge space to enjoy the surrounding natural environment or as outdoor seating for meals when the weather is suitable. The covered terrace on the first floor too, makes for a great space to sit back, relax.

Prominent architectural features of the 5 bhk villas in Canca-Verla include sloping roofs, arched openings, wood-framed windows, and small old-fashioned balconies with ornate metal railings. Each aspect of the house is curated to facilitate harmonious living and complete relaxation. The thoughtful positioning of the windows, skyligh-

ts, and doors allows natural light and fresh air to brighten and ventilate the interiors and add an element of natural charm to your villa.



Art Centre.



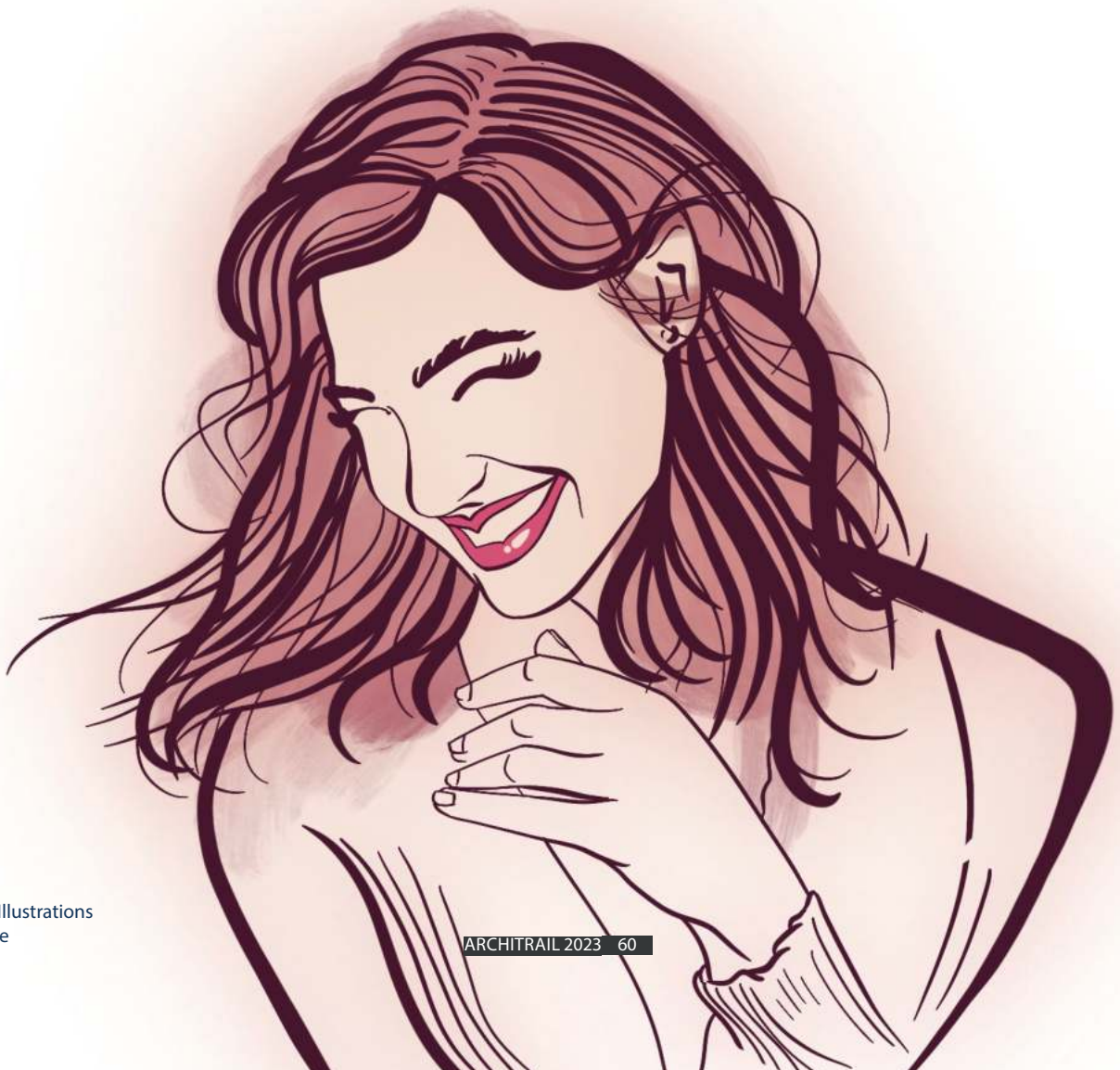
Ar. Atharva Pore

A residential unit having area 2100sq. ft in a very tiny plot of size 22x48 including 4 bedrooms, hall and kitchen. The plot is south facing the only road access to the plot. The client has the requirement to have more balconies and terraces. The bungalow has a double height terrace facing north, and the three balconies are north and north west facing. As the plot is south facing a huge 4' cantilever slab is created to keep the building in shadow in heavy afternoon sunlight.





Description: Digital Illustrations
by: Ar. Swarali Sagare



Description: Digital Illustrations
by: Ar. Swarali Sagare

Gade Heights



Ar. Renuka Raut

Gade Heights, a visionary project by ARR Architects and Associates (Jr. Architect:Ar.Renuka Raut), seamlessly blends commercial and residential elements on a 528.50 SqM site in Dahiwadi, Tal.Maan, Dist.Satara. The 1127 SqM built-up area reflects a meticulous balance of form and function. Nestled within a picturesque location, the design caters to diverse urban needs. With an estimated cost of Rs. 2 Crore 50 Lakhs, the project embodies contemporary aesthetic, and thoughtful spatial planning. Gade Heights stands as a testament to innovative architecture, promising a dynamic and integrated living experience while respecting environmental context of its surroundings.

Project details

Mixed Used building (Commercial and Residential)

Project Name: Gade Heights

Location: Dahiwadi, Tal.Maan, Dist.Satara

Total Site Area: 528.50 Sqm

Builtup Area: 1127 SqM

Total Estimated Cost: Rs.2 Crore 50 Lakhs

Project details

Mixed Used building (Commercial and Residential)

Project Name: Gade Heights

Location: Dahiwadi, Tal.Maan, Dist.Satara

Total Site Area: 528.50 Sqm

Builtup Area: 1127 SqM

Total Estimated Cost: Rs.2 Crore 50 Lakhs



Crafting Architectural Visions: The Entrepreneurial Odyssey



Ar. Shaunak Kadam

The term “entrepreneur” has its origins in the French language. It is derived from the Old French word “entreprendre,” meaning “to undertake” or “to begin.”

The word “entrepreneur” gained prominence in the early 19th century, primarily in economic and business contexts. French economist Jean-Baptiste Say is often credited with popularizing the term, defining an entrepreneur as someone who shifts resources from an area of lower to higher productivity.

Over time, the concept of entrepreneurship has evolved, encompassing various aspects of business innovation, risk-taking, and the creation of value in the market.

As an Architect, teacher and entrepreneur myself, the trisection of profession, academia and entrepreneurship holds a special place in my professional journey. In this discourse, we embark on a chronological exploration, unraveling the meaning of an entrepreneur, delving into the concept of entrepreneurship, understanding the contem-

porary relevance of an entrepreneurial mindset, exploring its role in India’s economic development, contemplating the management and future of entrepreneurship, and finally, identifying the essential skills that mold a visionary architect into an entrepreneur.

1. Meaning of Entrepreneur: Navigating Uncharted Territories

At the heart of the entrepreneurial odyssey lies the essence of initiative and innovation. An entrepreneur, in the context of architecture, is a pioneer who dares to venture into uncharted territories, translating creative visions into tangible structures. It’s more than a title; it’s a mindset—one that combines artistic flair with strategic acumen and an unwavering spirit to transform dreams into reality.

2. Concept of Entrepreneurship in Architecture: Marrying Creativity with Commerce

Entrepreneurship in architecture transcends the traditional notion of a designer. It’s a symbiosis of creativity and commerce, where architects evolve from mere creators of spaces to visionaries capable of shaping the architectural landscape. The concept encompasses identifying opportunities, embracing calculated risks, and navigating the intricacies of both design and business realms.

3. Why Entrepreneurial Mindset is Important in Today’s Context: Thriving in a Dynamic Landscape

In the contemporary architectural landscape, an entrepreneurial mindset is not just advantageous; it’s indispensable. Rapid technological advancements, changing client expectations, and a dynamic market necessitate architects to be proactive problem-solvers, strategic thinkers, and adaptable innovators. An entrepreneurial mindset empowers architects to navigate uncertainties, envision sustainable solutions, and remain at the forefront of a constantly evolving

profession.

4. Role of Entrepreneurship in Economic Development of India: Architectural Catalysts for Growth

Entrepreneurship in architecture plays a pivotal role in the economic development of India. As the country strives for infrastructural excellence, innovative architectural solutions become the cornerstone of sustainable development. Entrepreneurial architects contribute not only to the aesthetic fabric of the nation but also to job creation, technological advancements, and fostering a culture of innovation essential for economic progress.

5. Management and Future of Entrepreneurship: Orchestrating Architectural Success Stories

The management of entrepreneurship in architecture requires a delicate balance between design excellence and business acumen. It involves strategic planning, effective resource allocation, and the cultivation of a collaborative and innovative culture. Looking to the future, the entrepreneurial journey in architecture holds the promise of reshaping urban landscapes, embracing sustainable practices, and pioneering architectural solutions for the challenges of tomorrow.

6. The Skills Required to be an Entrepreneur: Shaping Architectural Visionaries

Becoming an entrepreneurial architect demands a diverse skill set. Beyond design proficiency, architects must hone skills such as effective communication, project management, financial literacy, and adaptability. An entrepreneurial architect is a multifaceted professional who combines technical expertise with the ability to navigate the complexities of the business world.

The fusion of entrepreneurship and architecture is not a divergence but a convergence that propels the profession forward. As architects, educators, and entrepreneurs, we stand on the precipice of a transformative era where each design becomes not just a structure but a catalyst for economic development, innovation, and sustainable growth. By embracing the entrepreneurial mindset, architects become not only creators of spaces but pioneers shaping the very future of our architectural landscapes. As we embark on this journey, let our designs resonate not only with aesthetic brilliance but with the echoes of entrepreneurial visions that transform dreams into architectural masterpieces.

In essence, while architects and entrepreneurs operate in different professional spheres, they share several qualities rooted in creativity, vision, adaptability, and attention to detail. The specific manifestation of these qualities, however, varies based on the unique demands and contexts of

	Creativity	Risk-Taking	Vision and Ambition	Approach	Adaptability	Attention to Detail	Leadership and Collaboration
Architects	Innovative solutions to design challenges	Calculated Design risks	Evoke emotions, meet functional needs and contribution to the built environment	Client centric approach	Design trends, Construction technologies and Client preferences	Project Management	Vision to Fruition
Entrepreneurs	Problem Solving	Financial Risks and market uncertainties	Create value in the market	Customer centric approach	Pivot based on market feedback, technological advancement or changes in the competitive landscape	Product development to Financial management	Partnerships and building effective teams to achieve common goals

Rayat Sevak Co-op. Bank



Ar. Suhas Talekar



Ar. Sujata Talekar

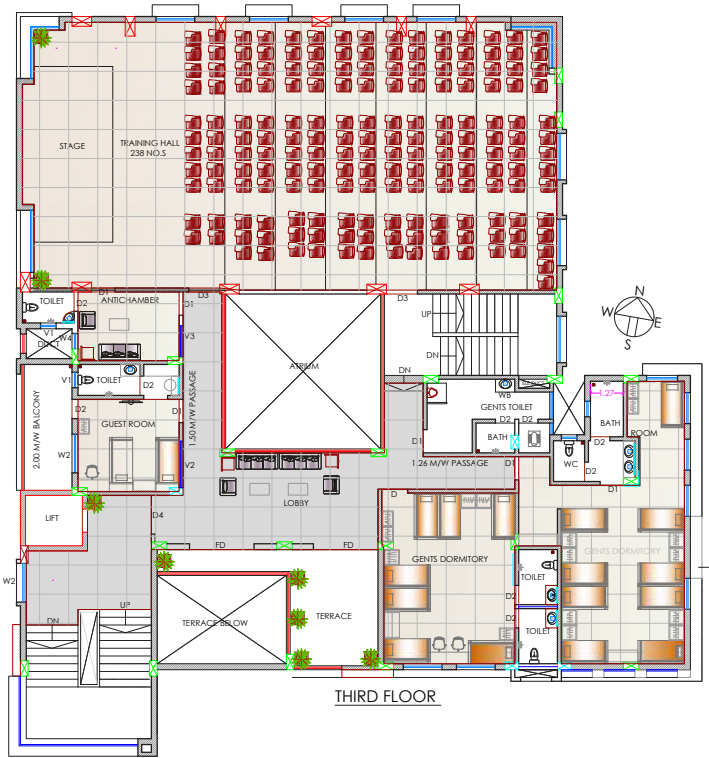
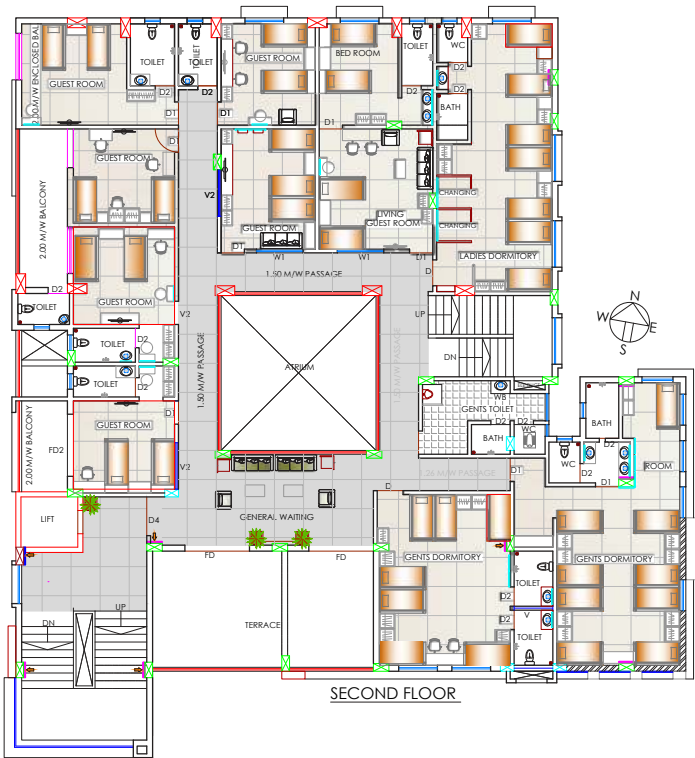
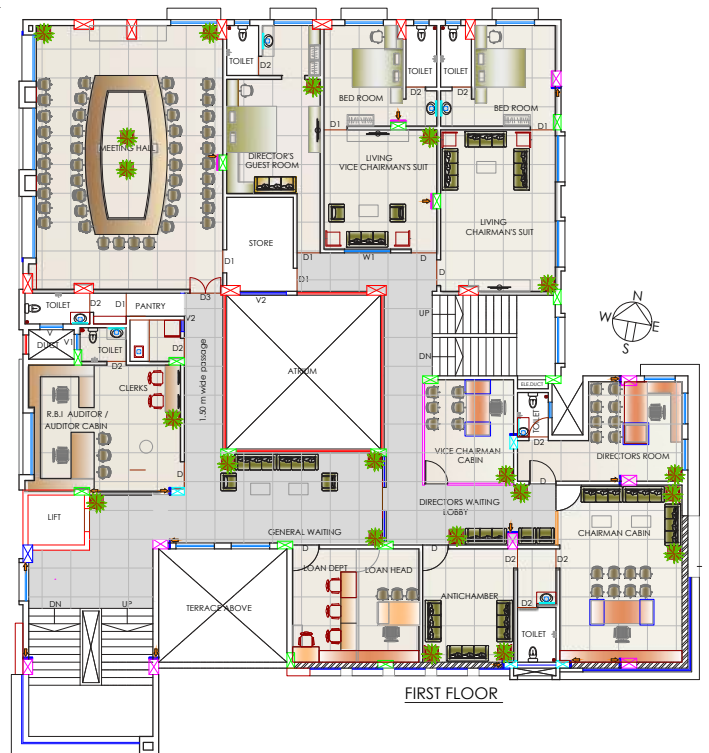
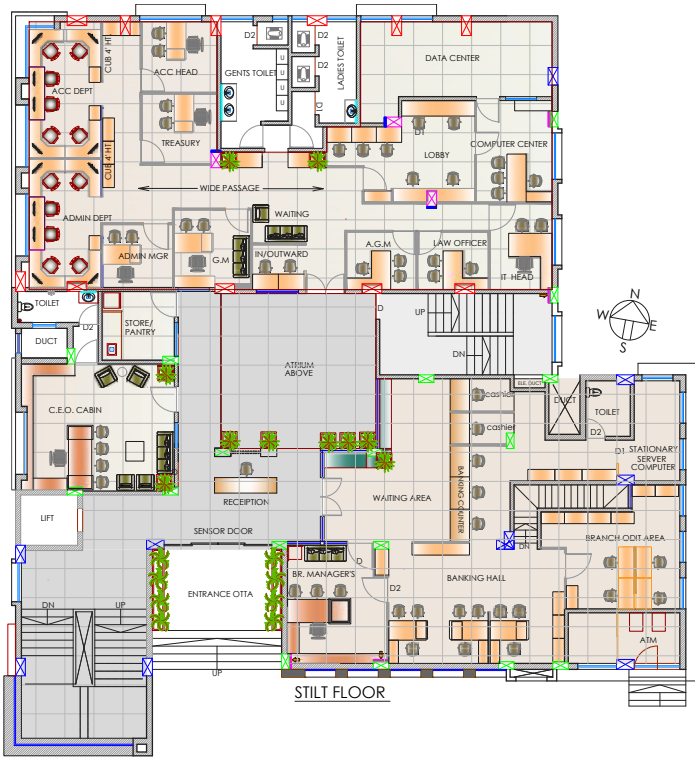
Rayat sevak co.op. Bank is spine for economical growth of rayat employees & created benchmark for followers to follow and stands as a pillar for all employees.

- Building design will reflect the achievements & goals of bank. Atmosphere created will inspire employees to perform at their best. The art & science of enhancing interior of building to achieve more healthier & aesthetically pleasant environment.

- We have satisfied client's by developing a deep sense of the understanding in client's business & it's objectives through economically viable solutions and error free operations with aesthetically pleasing built form.

- Banyan tree with branches is symbol of RAYAT . Hence adopted green vegetation, planters at various places in building. Mandana flooring patterns with basalt stone platform for Karmaveer Bhaurao Patil Statue.

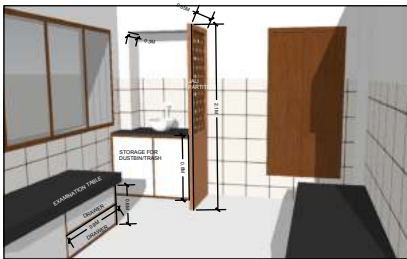
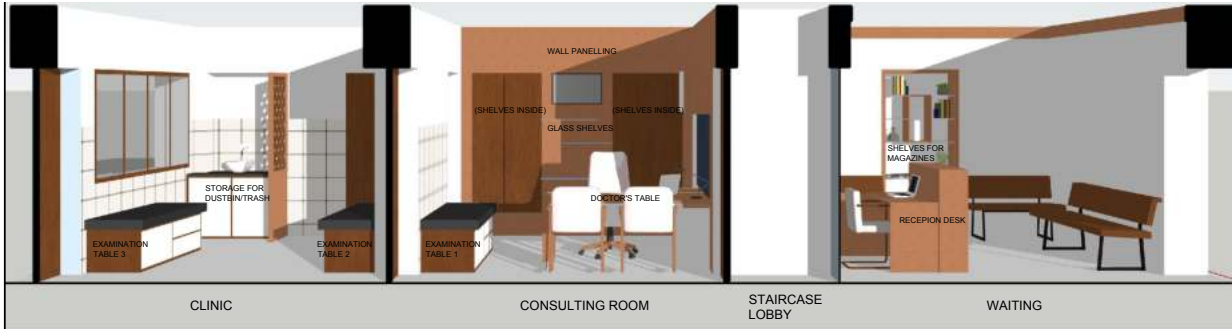
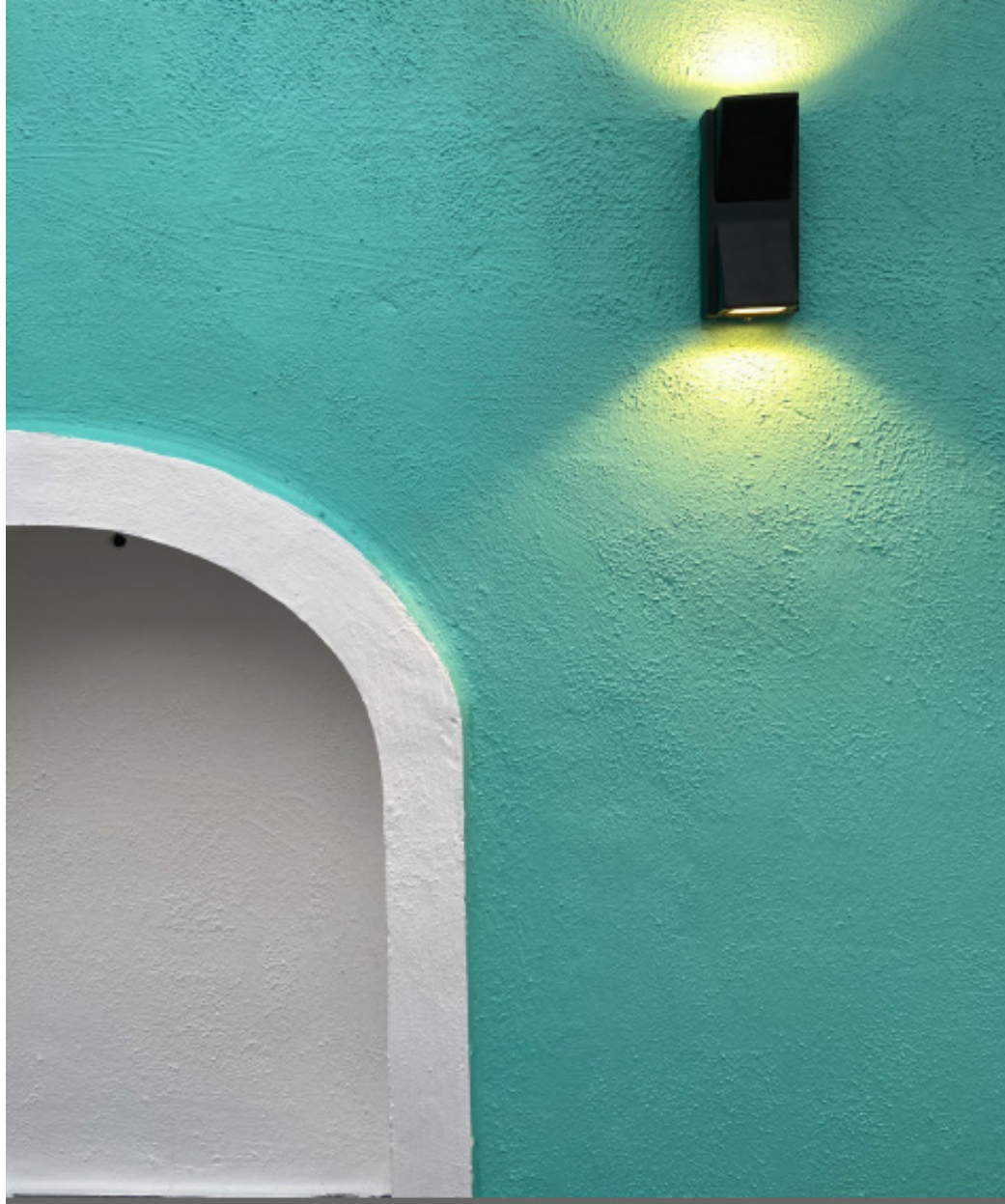




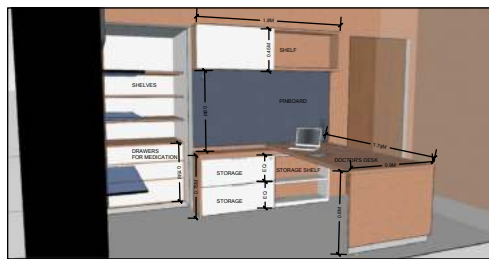
Nandadip Wada Restoration



Ar. Swarali Sagare



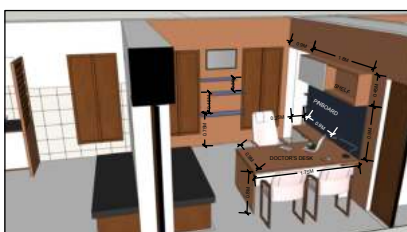
CLINIC



CONSULTING ROOM - DOCTOR'S DESK



RECEPTION DESK



CONSULTING ROOM



WAITING AREA



The retrofitting of Nandadip Wada presented a unique challenge: to modernize the structure while preserving its rich cultural and architectural heritage dating back over 200 years. Owned by Dr. Vrunda Kulkarni, the project aimed to enhance the functionality of the building while maintaining its essence of Maratha culture and vernacular architecture.

To achieve this delicate balance, extensive research was conducted over a period of six months by volunteers from Fo.Yr. under the guidance of Prof.Ar. Swarali Sagare. This research delved into the history and cultural significance of the Wada,

providing invaluable insights into its architectural nuances and historical context.

Following this thorough research phase, the retrofitting project commenced, adhering closely to the client's requirements. The clinic located on the ground floor underwent a refurbishment aimed at optimizing the space for enhanced usability. The courtyards, integral to the traditional Wada layout, were semi-modernized to blend functionality with traditional aesthetics.

Additionally, modifications were made to accommodate modern amenities such as an expanded garage and the inclusion of Western-

n-style toilets and luxury bathrooms within the residence on the first and second floors. These alterations were carefully integrated into the existing structure to ensure minimal disruption to the Wada's architectural integrity.

Overall, the retrofitting of Nandadip Wada stands as a testament to successful preservation and adaptation, seamlessly blending historical significance with contemporary functionality to ensure its continued relevance for generations to come.



Manas



Ar. Gautam Bhurke

This particular project is a perfect example of balanced result of smooth functionality of all requirements along with a galvanic experience of structure fitted within nature.

- Unique expression of design makes the place more public where people love to think that they are part of something distinctive and would love to flock to the restaurant.

- Perfect placement of main structure give the ability to transform from light filled casual eatery during the day enjoying with stunning



view of valley to a potent high energy experience during night.

Functionality

The design moves that ensued were an imagined contemporary interpretation with contextual influences. The basic thought was, the design should be practically sound from service perspective as well as the diners should enjoy the surroundings, especially splendid valley view and pleasant breeze while eating.

To achieve the same, dining spaces placed along the valley and mezzanine floor was purposely added to double up the valley side seating capacity.

The kitchen placed exactly between indoor and outdoor dining which proved to be convenient to serve the food and also created extra seating space above its slab.

Along with this, the single grid which we got below restaurant and kitchen floor was utilized to accommodate staff and which gets automatically detached from customers.

So the built and unbuilt forms, orientation of indoor- outdoor spaces and entire composition smoothly merged and fitted within the site.

Form

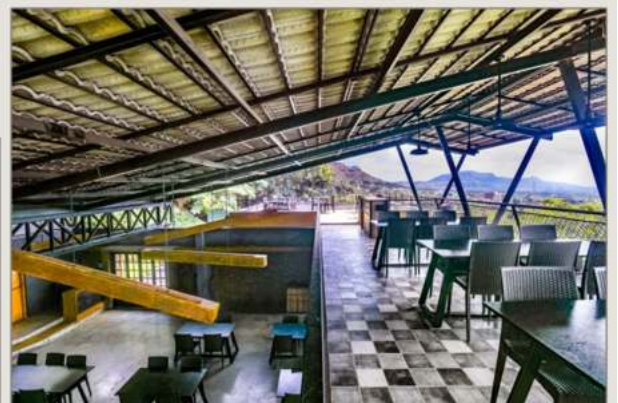
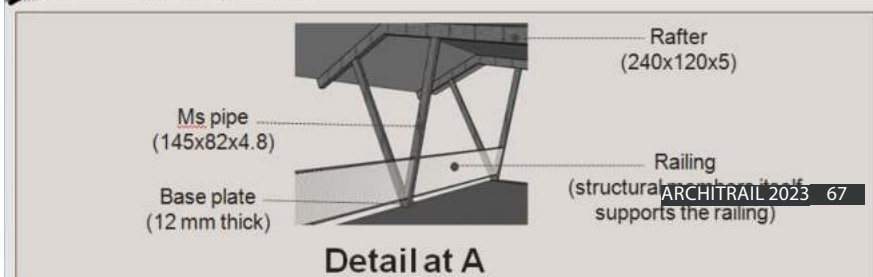
In this project, the overall form of a building is outcome because of the perfect solution to requirements, functions & context.

As section explains, we added up a mezzanine floor which increased the seating capacity facing towards valley.

The space found below main hall because of the natural contours was used tactfully fit the staff area which got hidden automatically from customers.

The overall placement of floors resulted in an interesting profile for roof in an upright direction opens out towards valley which avoids unnecessary height of structure proved to be cost effective.

The roof detailed out by adding up extra slope towards valley to give protection from rain also at backside the slope of roof designed in a





way to give a visual connection to the beautiful existing banyan tree while having food.

To balance the interesting form of roof 'V' shaped MS. Column were designed & supported by two parallel walls, completes the composition & resulted in an interesting & overwhelming form for the structure which is tactfully fitted & blended within natural terrain & impresses the customers.

Originality/ Innovation/ Creativity

- The first level drop from road is 1.5m. To minimize the feel of getting down, especially wide concrete steps in irregular pattern heading towards an exposed stone wall were designed, which make the existing banyan tree a focal point.

- To maintain the overall spatial expression of site, a level wise zoning has been created and overall planning was done from section to plan.

- The main structure got merged within the site and cannot be seen from main road but the proper placement of brick jali compound wall, concrete steps, exposed stone wall creates a curiosity to come inside.

Everyone gets amazed by seeing the tactfully fitted restaurant structure within the natural slope which opens out towards the valley which relaxes the mind.

Sustainability

- As this is a lease agreement site, the major structure was done in mild steel which can be reused.

- No natural stream was blocked and retained the natural terrain.

- Basic construction techniques used like exposed brickwork, stone walls, dry stone pitching, etc. was done by local mesons.

Sensorial and spatial experiences

Best restaurants are always become the perfect fusion of food & ambiance.

Keeping the same in mind, taking advantage of sloping site on each level we tried to create & maintain the curiosity.

From road level, the exposed brick jali compound wall within green surrounding attracts the guests & creates the curiosity to come inside.

From main gate, the proper placement of irregular black stone wall along with beautiful existing Banyan tree altogether welcomes the guests.

The natural slope was carried out by clever arrangement of random yet functional patterned steps inspired by Local River 'ghats' creates a harmonious ambience.

After which a tactful fitted restaurant within natural slope with stupendous roof, exposed brickwork with unfinished plastered walls, wood work, and landscape everything altogether give the required impression.

Inside the restaurant, on every table got a unique seating experience because of the upright sloping roof & breathing valley view.

Overall the ambience encourages food lovers to eat more & come again & again.





**YSPM's
YASHODA COLLEGE OF ARCHITECTURE
SATARA**

**ACCREDITED WITH
NAAC B ++**

**Cordially invites you for
ANNUAL EXHIBITION 2023-24**

॥ आयाम् ॥

**Inauguration By
Mr. Pramod Dhanke
Town Planner
Satara Nagarparishad, Satara**

**In esteemed presence of
Hon. Prof. Dasharath Sagare
President , YSPM Satara**

**Hon. Prof. Ajinkya Sagare
Vice-President , YSPM, Satara**

**Hon. Dr. V. K. Redasani
Director, YTC, Satara**

**Invitee
Ar. Suhas Talekar
Principal, YCA , Satara**

**Day & Date : Tuesday, 6th February, 2024
Time : 10.30 AM**

**Exhibition open from
6th & 7th February 2024
Time : 10.30 AM - 5.00 PM**

VENUE

Yashoda College of Architecture, Satara

**Faculty Co-ordinator
Ar. Renuka Raut
9561949409**

**Ar. Omkar Bhosale
8600024646**

**Student's council President
Anuja Shinde**

**Exhibition Co-ordinator
Arati Nevarekar
9146890717**

ARCHITRAIL 2023 69



Yashoda Shikshan Prasarak Mandal's

YASHODA COLLEGE OF ARCHITECTURE, SATARA

Wadhe, NH-4, Satara - 415 011
website : www.ycoa.org.in

ACCREDITED WITH NAAC B ++

BACHELOR OF ARCHITECTURE (B. Arch.)

- UG Course of 5 Years
- Recognised by Council of Architecture, New Delhi
- Affiliated to Shivaji University, Kolhapur

Eligibility Criteria for Architecture Admission

- Passed (10+2) HSC Examination OR
- Passed (10+3) Full time diploma with Mathematics as Compulsory subject AND
- Candidate needs to qualify the NATA Conducted by COA or JEE Mains conducted by NTA

* The eligibility criteria is designed by the COA and may Change

Facilities

- Scholarship as per Government norms
- Excellent Academic Achievements
- Highly qualified, experienced teaching staff
- Well-equipped Computer Laboratories
- Interactive & Digital Classroom
- Hostel Facility on Campus
- Activity - Based Learning
- Wi-fi Campus
- Transport facility
- Sports / Gym Facility
- Digital Library
- Industrial Tours
- Nearest Campus to Satara City
- Beautiful, Clean & Healthy Campus
- Yashoda World Digital Campus
- Expert lectures of eminent personalities



For more details contact
9970015551 / 8149758344
email : sds_arch@yes.edu.in
avj_civil@yes.edu.in

Contact for admission

Ar. Suhas Talekar (Principal)

9822044210 principalarch@yes.edu.in

Ar. Snehal Shedge

9822044210 sss_arch@yes.edu.in

